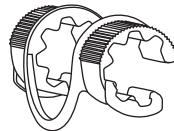


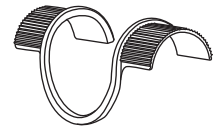
# LT-98 Quick Release Buckle



ø22.2mm~28.6mm  
SECURE BRACKET



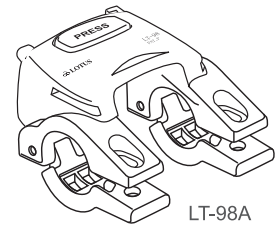
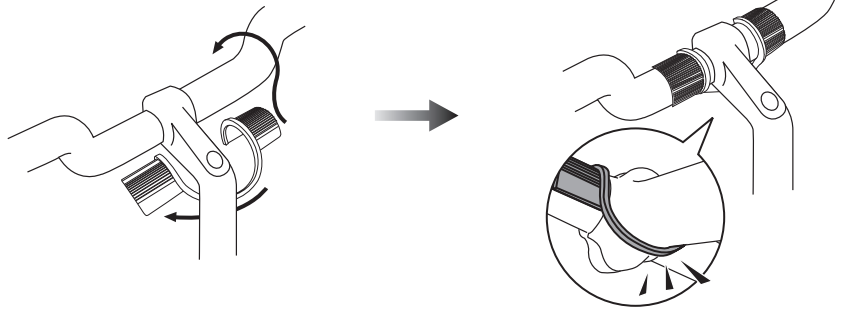
=ø31.8mm  
SECURE BRACKET



## Instructions

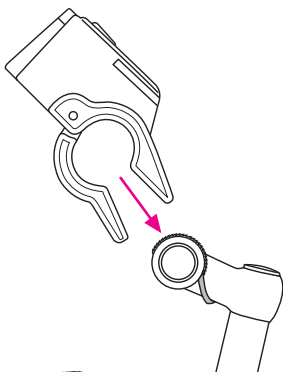
### Step: 1

- Place the secure bracket to handlebar under the stem. Please note that the plastic line of secure bracket must be against the stem as illustrated.



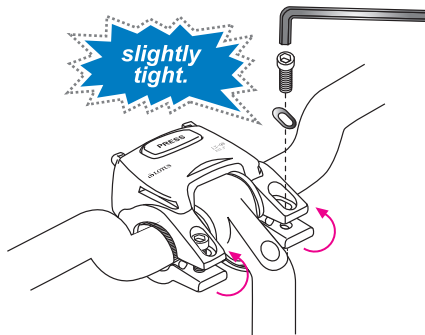
### Step: 2

- Install the LT-98A QR buckle to handlebar in about 45 degree.



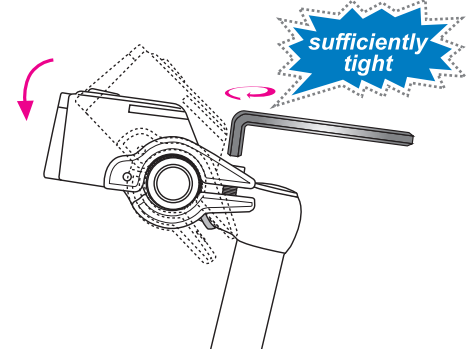
### Step: 3

- Close the clamps, and then place the washers on the holes.
- Use the Allen key to screw the bolts to slightly tight.



### Step: 4

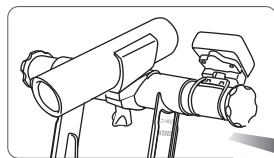
- Push the LT-98A QR buckle down to the desire position.
- Use the Allen key again to screw the bolts to sufficiently tight as illustrated.



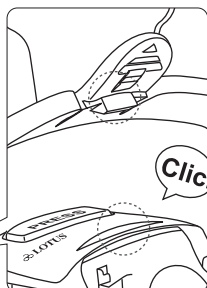
### Step: 5

LT-98LS is an optional item.

TAIWAN PAT. M351827 / CHINA PATENT. 200820153651.4



LT-98LS is an extension that allows more accessories to be fitted when using the LT-98A bracket.



Slide the light stand into the LT-98A bracket until it clicks in place, as illustrated.

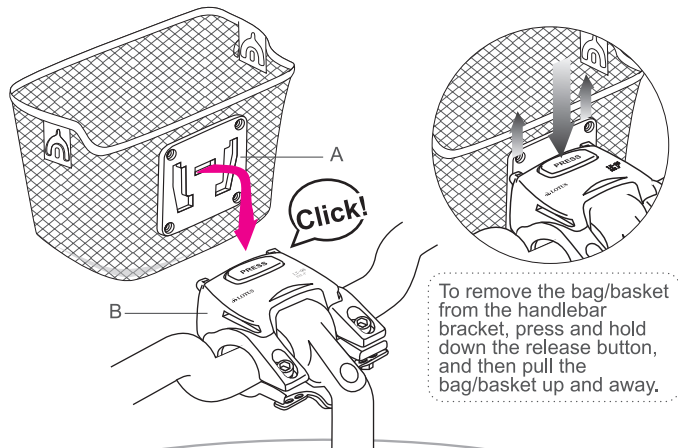
To remove the light stand, pull the tab upwards and slide the fitting out of the LT-98A bracket.

Light Stand (LT-98LS)

LT-98A

### Step: 6

- Your bracket is now properly installed. Position your bag/basket with the receiving plate (A) facing the handlebar bracket (B). Carefully mate the two components and then slide the bag/basket downwards until it clicks in place.



To remove the bag/basket from the handlebar bracket, press and hold down the release button, and then pull the bag/basket up and away.

EN ver. 9.0 2013/2/19  
MADE IN TAIWAN

**Warning:**  
Do not load more than 6kg into handlebar bag or basket, as this can affect steering.  
Ensure all brake and gear cables functions correctly after fitting.

Can not be used under temperature of  
-4°F / -20°C