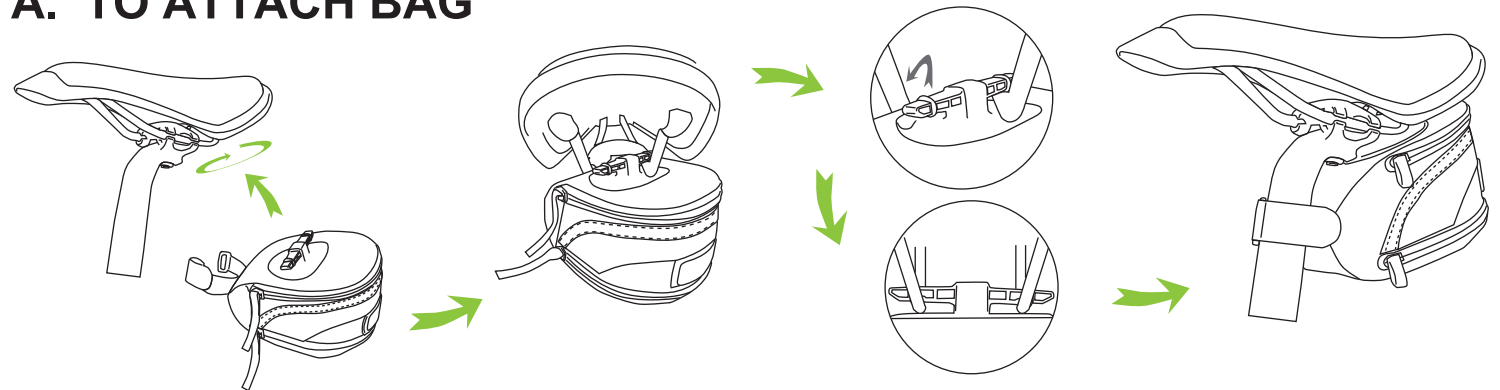
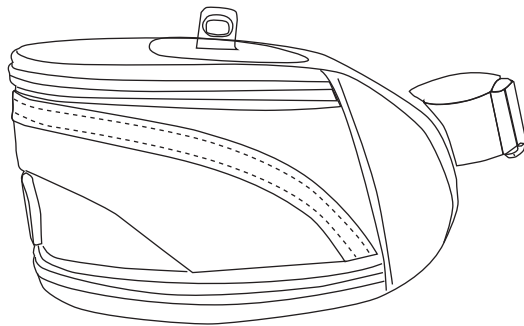


LT-27 Quick Release Buckle



www.lotus-bag.com

A. TO ATTACH BAG

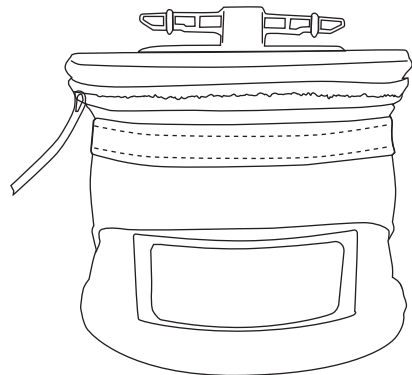


(1). Insert one end of plastic T-Bar into saddle rail.

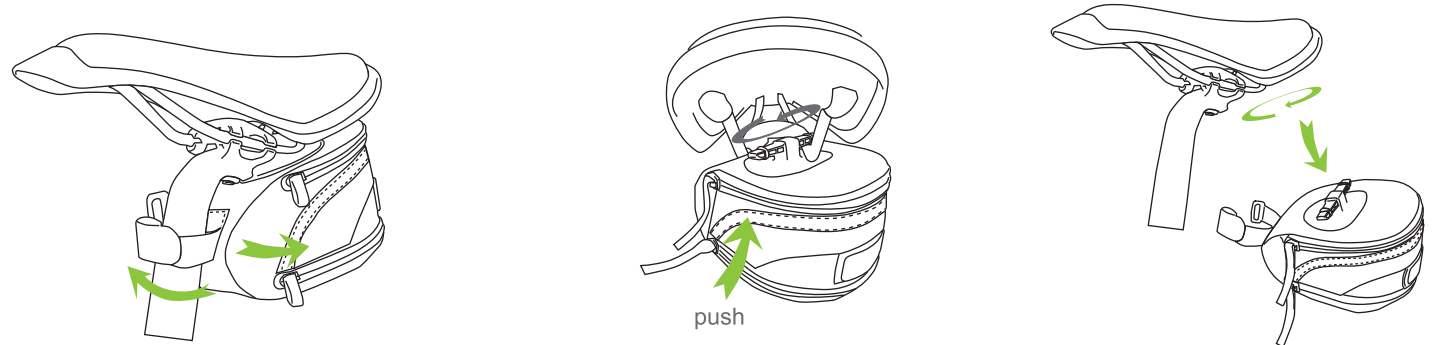
(2). Push other end of T-Bar in and twist up and inwards.

(3). Adjust T-Bar so that both ends are even.

(4). Attach retention strap so bag is secured to seat post.



B. TO RELEASE BAG



(1). First take retention strap off

(2). Push T-Bar to one side and then twist T-Bar to release from rails.

(3). Remove unit from saddle.

Can not be used under temperature of -4°f / -20°c



EN ver. 2.0 2013/7/17
MADE IN TAIWAN