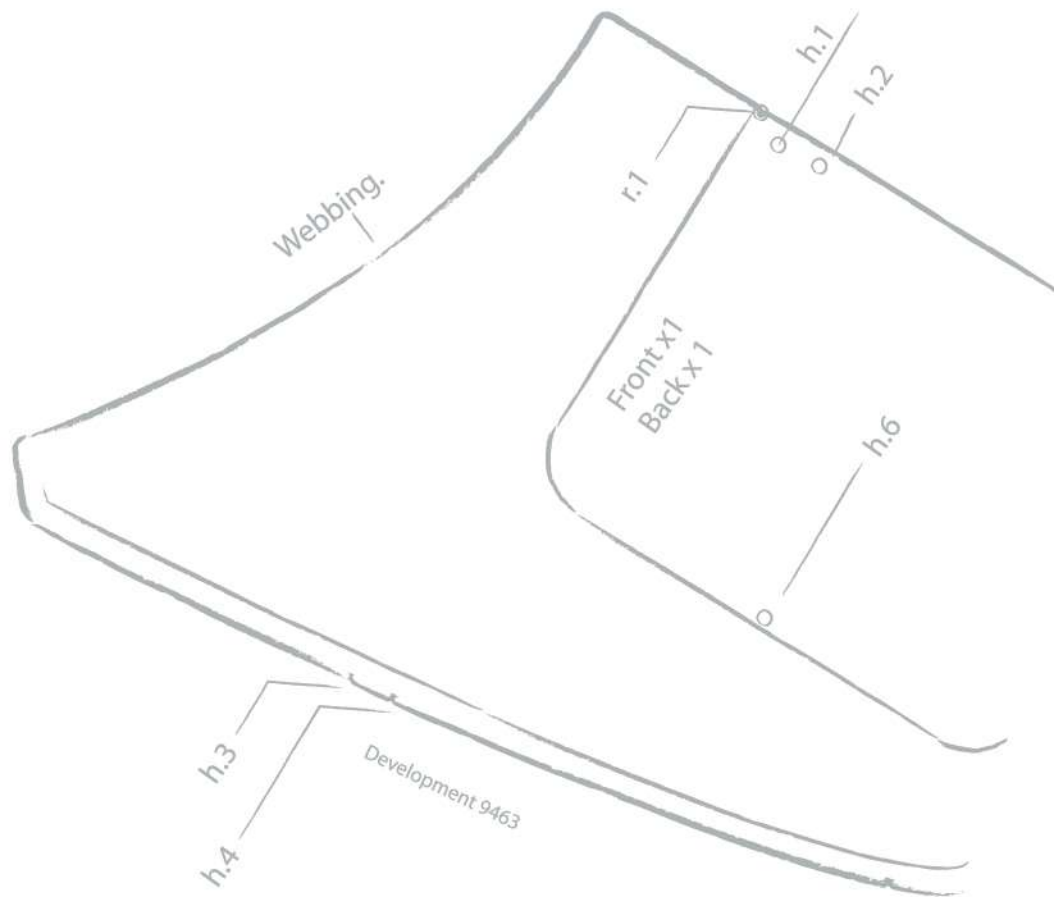
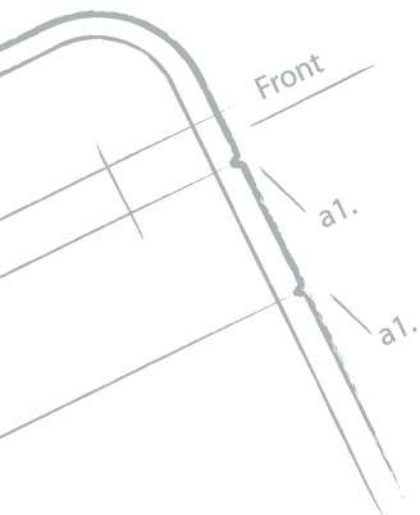


SHINE-HO 2010'-11' Overview

PASSION • ADVENTURE




2010-2011

LOTUS BAG

At Shine-Ho, we strive to lead in the innovation,
quality and fabrication of the industry's most advanced cycling bags
and related accessories. Our target is to deliver high value products and
professional solutions to our worldwide customers.







Shine-Ho was founded by Mr. Julio Ho in 1978, originally specializing in bicycle bags under the LOTUS brand name. The range of products has extended to knapsacks, sporting bags and hydration systems now.

In 1979, we produced a line of high quality cycling bags for WSI. It was the first in a series of manufacturing contracts, which later included other well-known brand names in the bicycle industry, such as SCHIWNN, Service Cycle, RALEIGH USA, BLACK BURN, Halfords, GIANT, and KHS.

We even manufactured bicycle bags and knapsack for Mercedes-Benz and BMW. These days, we produce not only high quality bags at our manufacturing base in Taiwan, but also focus on research and development to meet our customers' needs.



1978

- Shine-Ho was established by Julio Ho. LOTUS, the brand name of Shine-Ho, was created at same time.
- Shine-Ho got first big order from TRUMPH via KENLIGHT.

1980

- SCHWINN placed orders to Shine-Ho via AFS.

1986

- Shine-Ho got orders from DECATHLON.
- Shine-Ho began to have partnership with BALENA.

1997

- SCHWINN placed orders to Shine-Ho via TOPEAK
- Shine-Ho invented a great handlebar mounting system, LT-58.

1979

- Shine-Ho got orders form WSI via ARROW, it was the time which we began to produce high quality products.

1984

- WSI created new brand name, AVENIR, and placed orders to Shine-Ho via RAMIKO. After RALEIGH took over AVENIR, they continued to place orders to us till now.

1991

- Shine-Ho cooperated with BLACKBURN via BETO.

1998

- HALFORDS placed its 1st orders to Shine-Ho.



2000

- Shine-Ho sold baskets to TARGET via BETO
- Shine-Ho got an order from Mercedes-Benz for bike bags via PAUL LANGE and ACCORD.

2007

- Shine-Ho invented a great handle-bar mounting system, LT-58.

2009

- Shine-Ho started to cooperate with CROPS in the Japan and Asia market.
- Shine-Ho designed new quick release mounting system for saddle bags, LT-29.
- Shine-Ho designed new quick release mounting system for trunk bags, LT-43.
- Shine-Ho passed **ISO 9001:2008** qualification.

2006

- Shine-Ho got orders from FUJI via IDEAL.

2008

- **The anniversary of 30 years.**
- Shine-Ho developed whole new waterproof bags.
- Shine-Ho also started to cooperate with Serfas.
- Shine-HO passed ISO 9001:2000 qualification.

2010

- LOTUS has announced its own brand which known as LTG (Lotus Technology Gear).
- Shine-Ho invented a new generation of handle bar mounting system, LT-98.





Content

| | |
|-----------------------|-------|
| Saddle Bag | 2~3 |
| Handlebar Bag | 4~5 |
| Pannier | 6~7 |
| Trunk Bag | 8~9 |
| Top Tube Bag | 10~11 |
| Waterproof Bag | 13 |
| Women & Girl | 14 |
| Basket | 15 |
| Other Bags | 16~18 |
| Bike Cover | 19 |
| Hydration Pack | 20 |
| Other Accessories | 21 |
| Quick Release System | 22~24 |
| Bike Wear | 25 |
| Color & Material List | 26 |



Saddle Bag



NEW!

SH-9702R

Big capacity with 3M™ reflective material which increases safety at night riding.



| | |
|-------------------|---|
| Bag Attachment | LT-25 / LT-27 / LT-29 / Velcro Fastening |
| Material | 600D Polyester + 420D Nylon (Rip-stop) / 1000D Cordura® |
| Extendable | No |
| Zipper | YKK® |
| Reflective Stripe | 3M™ |
| Light Clip | Yes |
| Size | L, M, S |
| Capacity (ml) | L 1000, M 800, S 600 |
| Weight (g) | L 130, M 116, S 98 |
| Colors | All colors |

SH-5401R

Available with an inner mesh pocket for small accessories. Zipped base extends to increase the storage



| | |
|-------------------|---|
| Bag Attachment | LT-25 / LT-27 / LT-29 / Velcro Fastening |
| Material | 600D Polyester + 420D Nylon (Rip-stop) / 1000D Cordura® |
| Extendable | Yes, Large size and Medium size only |
| Zipper | YKK® |
| Reflective Stripe | 3M™ |
| Light Clip | Yes |
| Size | L, M, S |
| Capacity (ml) | L 1100/1500, M 700/1000, S 400 |
| Weight (g) | L 134, M 106, S 85 |
| Colors | All colors |

Extendable



SH-6702R

Aero-dynamic designs with water resistance and wear resistance materials which increase its practicability.



| | |
|-------------------|--|
| Bag Attachment | LT-27 / LT-28 / LT-29 / LT-29 + LT-28OB / Velcro Fastening |
| Material | 600D Polyester, 420D Nylon (Rip-stop) / 1000D Cordura® |
| Extendable | No |
| Zipper | YKK® |
| Reflective Stripe | 3M™ |
| Light Clip | Yes |
| Size | L, M, S |
| Capacity (ml) | M 700, S 500 |
| Weight (g) | L 175, M 134, S 90 |
| Colors | All colors |

SH-702R

Molded EVA with 1682D Nylon. Wear resistance material with special design of mounting system which can fit on any kind of saddle.



| | |
|-------------------|----------------------|
| Bag Attachment | LT-28 |
| Material | Eva + 1682D Nylon |
| Extendable | No |
| Zipper | YKK® |
| Reflective Stripe | No |
| Light Clip | Yes |
| Size | L, M, S |
| Capacity (ml) | L 1000, M 600, S 400 |
| Weight (g) | L 125, M 118, S 98 |
| Colors | Black |



SH-0501R

Uses water resistance and wear resistance materials with 3M reflective strap for increasing its practicability and safety issue.



| | |
|-------------------|---|
| Bag Attachment | LT-25 / LT-27 / LT-29 / Velcro Fastening |
| Material | 600D Polyester + 420D Nylon (Rip-stop) / 1000D Cordura® |
| Extendable | Yes, Large size and Medium size only |
| Zipper | YKK® |
| Reflective Stripe | 3M™ |
| Light Clip | Yes |
| Size | L, M, S |
| Capacity (ml) | L 1100/1400, M 700/900, S 400 |
| Weight (g) | L 114, M 100, S 89 |
| Colors | All colors |

SH-5701R

Uses water resistance and wear resistance materials with 3M reflective strap for increasing its practicability and safety issue.



| | |
|-------------------|---|
| Bag Attachment | LT-25 / LT-27 / LT-29 / Velcro Fastening |
| Material | 600D Polyester + 420D Nylon (Rip-stop) / 1000D Cordura® |
| Extendable | Yes, Large size and Medium size only |
| Zipper | YKK® |
| Reflective Stripe | 3M™ |
| Light Clip | Yes |
| Size | L, M, S |
| Capacity (ml) | L 1100/1400, M 700/900, S 500 |
| Weight (g) | L 114, M 100, S 89 |
| Colors | All colors |

Extendable

Extendable

Quick Release System



LT-25



LT-29



LT-27



LT-28



LT-25-OB



SH-903TR

An inner mesh pocket is for small accessories. Two side pockets are for cycle tools, such as multi tool kit, glue less patch, and three tire levers.



| | |
|-------------------|--|
| Bag Attachment | LT-25 / LT-27 / LT-29 / Velcro Fastening |
| Material | 600D Polyester + PVC Leather |
| Extendable | Yes |
| Zipper | YKK® |
| Reflective Stripe | 3M™ |
| Light Clip | Yes |
| Size | M |
| Capacity (ml) | M 800/1000 |
| Weight (g) | M 170 |
| Colors | Black |

NEW!

SH-9411FR

It has a high capacity for the stuffs, and uses 3M™ reflective materials around itself in order to increase safety issue at night time.



| | |
|-------------------|---|
| Bag Attachment | LT-27 / LT-29 / Velcro Fastening |
| Material | 600D Polyester + 420D Nylon (Rip-stop) / 1000D Cordura® |
| Extendable | No |
| Zipper | YKK® |
| Reflective Stripe | 3M™ |
| Light Clip | Yes |
| Size | L, M, S |
| Capacity (ml) | 800 |
| Weight (g) | 125 |
| Colors | All colors |

SH-10Y

Cylinder saddle bag. Soft padding inside is for better protection. It is available to be used as a handlebar bag with two extra holders.



SH-10

| | |
|-------------------|---|
| Bag Attachment | Velcro Fastening |
| Material | 600D Polyester + 420D Nylon (Rip-stop) / 1000D Cordura® |
| Extendable | No |
| Zipper | YKK® |
| Reflective Stripe | 3M™ |
| Light Clip | Yes |
| Size | M |
| Capacity (ml) | 1800 |
| Weight (g) | 105 |
| Colors | All colors |

NEW!

SH-9411PR

It has two side pockets with cover, and uses 3M™ reflective materials around itself in order to increase safety issue at night time.



| | |
|-------------------|---|
| Bag Attachment | LT-27 / LT-29 / Velcro Fastening |
| Material | 600D Polyester + 420D Nylon (Rip-stop) / 1000D Cordura® |
| Extendable | No |
| Zipper | YKK® |
| Reflective Stripe | 3M™ |
| Light Clip | Yes |
| Size | L, M, S |
| Capacity (ml) | 800 |
| Weight (g) | 130 |
| Colors | All colors |

NEW!

SH-5401P

LOTUS classic saddle bag, it has racing style and convenient attachment design.



| | |
|----------------|------------------|
| Bag Attachment | Velcro Fastening |
| Material | 600D Polyester |
| Extendable | No |
| Zipper | YKK® |
| Light Clip | Yes |
| Size | M |
| Capacity (ml) | 500 |
| Weight (g) | 70 |
| Colors | Black |

NEW!

SH-9411M

It has a high capacity for the stuffs, and uses 3M™ reflective materials around itself in order to increase safety issue at night time.



| | |
|-------------------|---|
| Bag Attachment | LT-27 / LT-29 / Velcro Fastening |
| Material | 600D Polyester + 420D Nylon (Rip-stop) / 1000D Cordura® |
| Extendable | No |
| Zipper | YKK® |
| Reflective Stripe | 3M™ |
| Light Clip | Yes |
| Size | L, M, S |
| Capacity (ml) | 700 |
| Weight (g) | 130 |
| Colors | All colors |

Extendable System



Extendable

Rain Cover

Rain Cover is available as the optional item for all saddle bags.



Handlebar Bag



SH-9103R

SH-9103R contains a shoulder strap, a map case on the top, a cell phone pouch and a bottle holder at the sides. It is designed for the short journey.

| | |
|-------------------|---|
| Bag Attachment | LT-88A1 / LT-88A2 / LT-98 / Velcro Fastening |
| Material | 600D Polyester + 420D Nylon (Rip-stop) / 1000D Cordura® |
| Zipper | YKK® |
| Reflective Stripe | 3M™ |
| Capacity (ml) | 4200 |
| Weight (g) | 265 |
| Colors | All colors |



SH-6103CR

It has two layers, which is a main bag with two mesh side pockets and a front bag. Removable shoulder strap is also included.

| | |
|-------------------|---|
| Bag Attachment | LT-88A1 / LT-88A2 / LT-98 / Velcro Fastening |
| Material | 600D Polyester + 420D Nylon (Rip-stop) / 1000D Cordura® |
| Zipper | YKK® |
| Reflective Stripe | 3M™ |
| Capacity (ml) | 3900 |
| Weight (g) | 280 |
| Colors | All colors |



SH-03R

SH-03R contains a shoulder strap, a map case on the top, and two mesh pockets at the sides. It is designed for the short journey. Optional: Solar power energy set is available for SH-03R.

| | |
|-------------------|---|
| Bag Attachment | LT-88A1 / LT-88A2 / LT-98 / Velcro Fastening |
| Material | 600D Polyester + 420D Nylon (Rip-stop) / 1000D Cordura® |
| Zipper | YKK® |
| Reflective Stripe | 3M™ |
| Size | 28cm x 19cm x 20cm |
| Capacity (ml) | 5200 |
| Weight (g) | 525 |
| Colors | All colors |



SH-04PETR

SH-04PETR is designed for riding the bicycle with the small pets. The ice bag and warm bag can be put inside of comfortable pad which can make pets feeling good. The maximum carry capacity is 4kgs.

| | |
|-------------------|------------------------|
| Bag Attachment | LT-98 |
| Material | 600D Polyester + Nylon |
| Zipper | YKK® |
| Reflective Stripe | 3M™ |
| Size | 38cm x 29cm x 43cm |
| Capacity (ml) | 17800 |
| Weight (g) | 1300 |
| Colors | Brown |



Warm Bag



Quick Release System



LT-88-A1



LT-88-A2



LT-98



SH-503R

It has two side bags and a front bag. It also contains a map case and a removable shoulder strap.

| | |
|-------------------|---|
| Bag Attachment | LT-88A1 / LT-88A2 / LT-98 / Velcro Fastening |
| Material | 600D Polyester + 420D Nylon (Rip-stop) / 1000D Cordura® |
| Zipper | YKK® |
| Reflective Stripe | 3M™ |
| Capacity (ml) | 6000 |
| Weight (g) | 465 |
| Colors | All colors |



SH-8404R

Handlebar bag with rigid foam-lined walls for protection and movable dividing wall to help organize accessories. Large zipped front pocket, bottle holder, mesh side pocket and detachable map case. Carry handle and detachable shoulder strap.

| | |
|-------------------|---|
| Bag Attachment | LT-88A1 / LT-88A2 / LT-98 / Velcro Fastening |
| Material | 600D Polyester + 420D Nylon (Rip-stop) / 1000D Cordura® |
| Zipper | YKK® |
| Reflective Stripe | 3M™ |
| Capacity (ml) | 6000 |
| Weight (g) | 520 |
| Colors | All colors |



SH-6404R

It is designed for the long distance traveling. It has a bottle holder, a mobile phone pocket, a shoulder strap and a map case. It has big capacity for everything you need in a long distance trip.

| | |
|-------------------|---|
| Bag Attachment | LT-88A1 / LT-88A2 / LT-98 / Velcro Fastening |
| Material | 600D Polyester + 420D Nylon (Rip-stop) / 1000D Cordura® |
| Zipper | YKK® |
| Reflective Stripe | 3M™ |
| Capacity (ml) | 7600 |
| Weight (g) | 500 |
| Colors | All colors |



SH-103DR

This is a handlebar bag which designs for carrying digital camera. It is not only having thick pads for the better protection but also come with a quick release mounting system, a shoulder strap and a rain cover. Multiple layers can help users to store many accessories such as photoflash, memory card and battery.

| | |
|-------------------|---------------------------|
| Bag Attachment | LT-88A1 / LT-88A2 / LT-98 |
| Material | 600D Polyester |
| Zipper | YKK® |
| Reflective Stripe | 3M™ |
| Light Clip | Yes |
| Weight (g) | 725 |
| Colors | Black |

Rain Cover

Rain Cover is available as the optional item for all handlebar bags.



Pannier



SH-309S

Pair of small pannier bags for the front or rear rack. Drawstring closure with elasticized lid and buckle fastening. Large front pocket and 2 mesh side pockets.

| | |
|-------------------|---|
| Bag Attachment | BR, BCR, R, VR |
| Material | 600D Polyester + 420D Nylon (Rip-stop) / 1000D Cordura® |
| Zipper | YKK® |
| Reflective Stripe | 3M™ |
| Light Clip | Yes |
| Capacity (ml) | 19600 |
| Weight (g) | 940 |
| Colors | All colors |



SH-309L

Drawstring closure with elasticized lid and buckle fastening. Large front pocket and 2 mesh side pockets, it allows users to store many stuffs.

| | |
|-------------------|---|
| Bag Attachment | BR, BCR, R, VR |
| Material | 600D Polyester + 420D Nylon (Rip-stop) / 1000D Cordura® |
| Zipper | YKK® |
| Reflective Stripe | 3M™ |
| Light Clip | Yes |
| Capacity (ml) | 34800 |
| Weight (g) | 1145 |
| Colors | All colors |



SH-409

Large main compartment has a drawstring closure with elasticized lid and buckle fastening. Large zipped pockets on the front and side. Straps with buckles on top for attaching loose items.

| | |
|-------------------|---|
| Bag Attachment | BR, BCR, R, VR |
| Material | 600D Polyester + 420D Nylon (Rip-stop) / 1000D Cordura® |
| Zipper | YKK® |
| Reflective Stripe | 3M™ |
| Light Clip | Yes |
| Capacity (ml) | 36800 |
| Weight (g) | 1320 |
| Colors | All colors |



SH-104P

1-piece classic design featuring 2 large capacity pannier bags with a joined middle section and carry handle. Tall zipped main compartment and zipped front pocket on each bag.

| | |
|-------------------|---|
| Bag Attachment | Straps and Hooks attachment |
| Material | 600D Polyester + 420D Nylon (Rip-stop) / 1000D Cordura® |
| Zipper | YKK® |
| Reflective Stripe | 3M™ |
| Light Clip | Yes |
| Capacity (ml) | 26000 |
| Weight (g) | 700 |
| Colors | All colors |

Quick Release System



BR



BCR



R



VR



NEW!

SH-104C

1-piece aero-dynamic design featuring 2 large capacity pannier bags with a joined middle section and carry handle. Tall zipped main compartment and zipped front pocket on each bag.

| | |
|-------------------|---|
| Bag Attachment | Straps and Hooks attachment |
| Material | 600D Polyester + 420D Nylon (Rip-stop) / 1000D Cordura® |
| Zipper | YKK® |
| Reflective Stripe | 3M™ |
| Light Clip | Yes |
| Weight (g) | 820 |
| Colors | All colors |



SH-6144

Single shopping bag pannier for use on and off the bike. Quick release rack fitting and webbing carry handles. Zipped top closure to protect contents and internal zipped pocket. Folds flat when not in use.

| | |
|-------------------|--|
| Bag Attachment | BR, BCR, R, VR |
| Material | 600D Polyester + 420D Nylon (Rip-stop) |
| Zipper | YKK® |
| Reflective Stripe | 3M™ |
| Light Clip | Yes |
| Capacity (ml) | 21200 |
| Weight (g) | 700 |
| Colors | All colors |



Rain Cover

SH-809

Drawstring closure with elasticized lid and buckle fastening. Large front pocket and tall side pocket. An integrated hi-visibility nylon rain cover with elasticized seal is stored in a pocket on the base.

| | |
|-------------------|---|
| Bag Attachment | BR, BCR, R, VR |
| Material | 600D Polyester + 420D Nylon (Rip-stop) / 1000D Cordura® |
| Zipper | YKK® |
| Reflective Stripe | 3M™ |
| Light Clip | Yes |
| Capacity (ml) | 36800 |
| Weight (g) | 1280 |
| Colors | All colors |



SH-6105

The panniers have a large zipped main compartment and zipped front pocket. The briefcase has a padded laptop compartment and accessory pouches.

| | |
|-------------------|---|
| Bag Attachment | Straps and Hooks attachment |
| Material | 600D Polyester + 420D Nylon (Rip-stop) / 1000D Cordura® |
| Zipper | YKK® |
| Reflective Stripe | 3M™ |
| Light Clip | Yes |
| Capacity (ml) | 37400 |
| Weight (g) | 1680 |
| Colors | All colors |



LT-40RB



LT-31DP

Rain Cover

Rain Cover is available as the optional item for all panniers.



Trunk Bag



Extendable

SH-506DR

Trunk bag with rigid foam-lined walls and zipped extendable top section. Internal pouch and key hook. 2 large zipped side pockets and bungee cord on top. Carry handle and detachable shoulder strap.

| | |
|-------------------|---|
| Bag Attachment | LT-40A / LT-40A + LT-40B / LT-40A + LT-40RB / LT-41A + LT-41RB / Velcro Fastening |
| Material | 600D Polyester + 420D Nylon (Rip-stop) / 1000D Cordura® |
| Extendable | Yes |
| Zipper | YKK® |
| Reflective Stripe | 3M™ |
| Light Clip | Yes |
| Capacity (ml) | 6800 / 8700 |
| Weight (g) | 730 |
| Colors | All colors |



SH-606ER

Trunk bag with rigid foam-lined walls and 2 external zipped mesh pockets. Internal pouch and key hook. Bungee cord on top for attaching loose items. Carry handle and detachable shoulder strap.

| | |
|-------------------|---|
| Bag Attachment | LT-40A / LT-40A + LT-40B / LT-40A + LT-40RB / LT-41A + LT-41RB / Velcro Fastening |
| Material | 600D Polyester + 420D Nylon (Rip-stop) / 1000D Cordura® |
| Extendable | Yes |
| Zipper | YKK® |
| Reflective Stripe | 3M™ |
| Light Clip | Yes |
| Capacity (ml) | 5000 |
| Weight (g) | 400 |
| Colors | All colors |



Extendable

SH-706PR

Rigid foam-lined walls with internal pouch and key hook. Bungee cord on top for attaching loose items. Carry handle and detachable shoulder strap.

| | |
|-------------------|---|
| Bag Attachment | LT-40A / LT-40A + LT-40B / LT-40A + LT-40RB / LT-41A + LT-41RB / Velcro Fastening |
| Material | 600D Polyester + 420D Nylon (Rip-stop) / 1000D Cordura® |
| Extendable | Yes |
| Zipper | YKK® |
| Reflective Stripe | 3M™ |
| Light Clip | Yes |
| Capacity (ml) | 5200 / 13200 |
| Weight (g) | 790 |
| Colors | All colors |



SH-806R

Aero-dynamic trunk bag with rigid foam-lined walls, 2 large zipped side pockets and bottle holder. Internal accessories pouches. Top carry handle and detachable shoulder strap.

| | |
|-------------------|---|
| Bag Attachment | LT-40A / LT-40A + LT-40B / LT-40A + LT-40RB / LT-41A + LT-41RB / Velcro Fastening |
| Material | 600D Polyester + 420D Nylon (Rip-stop) / 1000D Cordura® |
| Extendable | Yes |
| Zipper | YKK® |
| Reflective Stripe | 3M™ |
| Light Clip | Yes |
| Capacity (ml) | 7700 |
| Weight (g) | 730 |
| Colors | All colors |

Quick Release System

LT-40RB



LT-40A + LT-40B



LT-43





NEW!

SHE-06

Lined and padded interior with movable dividing wall and zipped mesh compartment in the lid. Pump attachments on the base. Alloy frame with quick release fitting attaches to the seat post (LT-43, or LT-43C), (Pump is not included).

| | |
|-------------------|----------------|
| Bag Attachment | LT-43 / LT-43C |
| Material | Nylon, EVA |
| Extendable | No |
| Zipper | YKK® |
| Reflective Stripe | 3M™ |
| Light Clip | Yes |
| Capacity (ml) | 3200 |
| Weight (g) | 340 |
| Colors | All colors |



NEW!

SH-06EP

Trunk bag with rigid foam-lined walls, internal pouch, key hook, and detachable shoulder strap. Bungee cord on top for attaching loose items.

| | |
|-------------------|------------------|
| Bag Attachment | Velcro Fastening |
| Material | 600D Polyester |
| Extendable | No |
| Zipper | YKK® |
| Reflective Stripe | 3M™ |
| Light Clip | Yes |
| Capacity (ml) | 4800 |
| Weight (g) | 265 |
| Colors | All colors |



NEW!

SHE-07

Well padded interior with three inner pockets, and zipped mesh compartment in the lid. Three outer mesh pockets are at front and sides with 3M™ reflective straps.

| | |
|-------------------|--|
| Bag Attachment | LT-43 / LT-43C |
| Material | 900D Polyester + 420D Nylon (Rip-stop) |
| Extendable | No |
| Zipper | YKK® |
| Reflective Stripe | 3M™ |
| Light Clip | Yes |
| Capacity (ml) | 4500 |
| Weight (g) | 565 |
| Colors | All colors |



NEW!

SH-08

Well padded interior with three inner pockets, and zipped mesh compartment in the lid. Three outer mesh pockets are at front and sides with 3M™ reflective straps.

| | |
|-------------------|--|
| Bag Attachment | LT-43 / LT-43C |
| Material | 900D Polyester + 420D Nylon (Rip-stop) |
| Extendable | No |
| Zipper | YKK® |
| Reflective Stripe | 3M™ |
| Light Clip | Yes |
| Capacity (ml) | 4500 |
| Weight (g) | 570 |
| Colors | All colors |

Extendable System



Extendable

Rain Cover

Rain Cover is available as the optional item for all trunk bags.



Top Tube Bag



SH-14

1-piece set featuring 2 top tube pannier bags, each with a top cover and an internal mesh pocket. Velcro fastenings. Ideal for keeping a phone, camera, valuables and snacks close to hand while riding.

| | |
|-------------------|--|
| Bag Attachment | Velcro Fastening |
| Material | 600D Polyester + 420D Nylon (Rip-stop) |
| Reflective Stripe | 3M™ |
| Zipper | YKK® |
| Capacity (ml) | 600 |
| Weight (g) | 100 |



SH-12H

Tall pack for carrying valuables and snacks. Side phone pocket, zipped front pocket and internal key hook. Large flap with Velcro closure and clear pouch. Supplied with a shoulder strap. Fastens to the top the top tube or handlebar.

| | |
|-------------------|--|
| Bag Attachment | Velcro Fastening |
| Material | 600D Polyester + 420D Nylon (Rip-stop) |
| Reflective Stripe | 3M™ |
| Zipper | YKK® |
| Capacity (ml) | 1300 |
| Weight (g) | 180 |



SH-15

1-piece set featuring 2 top tube pannier bags with zipped top openings. Each bag has an internal pouch and an external mesh pocket. Velcro fastenings. Ideal for keeping valuables and snacks within reach while riding.

| | |
|-------------------|--|
| Bag Attachment | Velcro Fastening |
| Material | 600D Polyester + 420D Nylon (Rip-stop) |
| Reflective Stripe | 3M™ |
| Zipper | YKK® |
| Capacity (ml) | 600 |
| Weight (g) | 110 |



SH-17

Top tube pannier with a mobile phone at its center. Two side bags contain a mesh layer in order to store miscellaneous objects. Large reflective materials at sides to increase safety issue at night time.

| | |
|-------------------|--|
| Bag Attachment | Velcro Fastening |
| Material | 600D Polyester + 420D Nylon (Rip-stop) |
| Reflective Stripe | 3M™ |
| Zipper | YKK® |
| Capacity (ml) | 1200 |
| Weight (g) | 170 |



SH-16

1-piece set featuring 2 top tube pannier bags with a phone pocket in the middle. Each bag has an elasticized lid with a strap and buckle closure. Velcro fastenings. Perfect for keeping essential items nearby while riding.

| | |
|-------------------|--|
| Bag Attachment | Velcro Fastening |
| Material | 600D Polyester + 420D Nylon (Rip-stop) |
| Reflective Stripe | 3M™ |
| Zipper | YKK® |
| Capacity (ml) | 800 |
| Weight (g) | 180 |



SH-18

Top tube bag with big capacity. One mesh bag at front and a side layer for miscellaneous objects. Large reflective materials at side to increase safety issue at night time.

| | |
|-------------------|--|
| Bag Attachment | Velcro Fastening |
| Material | 600D Polyester + 420D Nylon (Rip-stop) |
| Reflective Stripe | 3M™ |
| Zipper | YKK® |
| Capacity (ml) | 800 |
| Weight (g) | 75 |



SH-12

Small pack with an internal pouch ideal for carrying valuables and snacks. Large flap with Velcro closure. Velcro strap bindings for fastening to the top tube.

| | |
|----------------|--|
| Bag Attachment | Velcro Fastening |
| Material | 600D Polyester + 420D Nylon (Rip-stop) |
| Capacity (ml) | 400 |
| Weight (g) | 60 |



SH-13

Perfect for keeping essential items close to hand without interfering with the riding movement. Top zipped opening for fast access. Attaches to the top tube and seat post with Velcro straps.

| | |
|----------------|-------------------------|
| Bag Attachment | Velcro Fastening |
| Material | 600D Polyester / Cotton |
| Capacity (ml) | 800 |
| Weight (g) | 70 |



SH-11W

Handy frame pack with horizontal zipped opening and integrated shoulder pad for carrying the bike. Ideal for carrying tools and other essential small items. Fastens to the top tube and seat tube with Velcro straps.

| | |
|----------------|--|
| Bag Attachment | Velcro Fastening |
| Material | 600D Polyester + 420D Nylon (Rip-stop) |
| Capacity (ml) | 500 |
| Weight (g) | 130 |



SH-11WT

Tool kit pack with zipped side opening and integrated shoulder pad for carrying the bike. Includes a folding multi-tool gadget and puncture repair kit with 3 tire levers. Fastens to the top tube and seat tube with Velcro straps.

| | |
|----------------|--|
| Bag Attachment | Velcro Fastening |
| Material | 600D Polyester + 420D Nylon (Rip-stop) |
| Capacity (ml) | 500 |
| Weight (g) | 130 (Not include tool set) |





Waterproof Bag



NEW!

WP-9401R-C

Aero-dynamic wedge shape waterproof saddle bag with sealed zipper access.

| | |
|----------------|------------------------|
| Bag Attachment | LT-29 |
| Material | Nylon with TPU coating |
| Light Clip | Yes |
| Capacity (ml) | 700 |
| Weight (g) | 100 |
| Colors | Silver / Black |



NEW!

WP-9103R

A zipped front bag and two mesh bags at sides for small objects and bottle. Map case on the top of bag for map or GPS.

| | |
|----------------|---------------------------|
| Bag Attachment | LT-88A1 / LT-88A2 / LT-98 |
| Material | Nylon with TPU coating |
| Light Clip | Yes |
| Capacity (ml) | 3700 |
| Weight (g) | 450 |
| Colors | Silver / Black |



WP-904R

Large lid with detachable map case, external front pocket with sealed zipper, internal zipped pocket, padded base and detachable shoulder strap.

| | |
|-------------------|---------------------------|
| Bag Attachment | LT-88A1 / LT-88A2 / LT-98 |
| Material | Nylon with TPU coating |
| Zipper | YKK® |
| Reflective Stripe | 3M™ |
| Light Clip | Yes |
| Capacity (ml) | 8300 |
| Weight (g) | 930 |
| Colors | Silver / Black |



NEW!

WP-1906R

Two external pockets with sealed zipper at sides. Carry handle and detachable shoulder strap. Bungee cord on top for attaching loose items.

| | |
|-------------------|--|
| Bag Attachment | LT-40A / LT-40A + LT-40B / LT-40A + LT-40RB / Velcro Fastening |
| Material | Nylon with TPU coating |
| Reflective Stripe | 3M™ |
| Light Clip | Yes |
| Capacity (ml) | 6400 |
| Weight (g) | 595 |
| Colors | Silver / Black |



WP-909LR

External side pocket with sealed zipper. Internal zipped pocket. Padded base and sides to protect the contents. Hi-visibility reflective material for improved road safety.

| | |
|-------------------|------------------------|
| Bag Attachment | R |
| Material | Nylon with TPU coating |
| Zipper | YKK® |
| Reflective Stripe | 3M™ |
| Light Clip | Yes |
| Capacity (ml) | 36000 |
| Weight (g) | 870 |
| Colors | Silver / Black |



WP-909SR

Suitable for use on the front or rear rack. Internal zipped pocket. Padded base and sides to protect the contents. Hi-visibility reflective material for improved road safety.

| | |
|-------------------|------------------------|
| Bag Attachment | R |
| Material | Nylon with TPU coating |
| Zipper | YKK® |
| Reflective Stripe | 3M™ |
| Light Clip | Yes |
| Capacity (ml) | 27200 |
| Weight (g) | 1420 |
| Colors | Silver / Black |

Women & Girls



SH-5701R-PU

Uses water resistance with 3M reflective strap for increasing its practicability and safety issue.

| | |
|-------------------|--|
| Bag Attachment | LT-25 / LT-27 / LT-29 / Velcro Fastening |
| Material | PU Leather |
| Extendable | Yes |
| Zipper | YKK® |
| Reflective Stripe | 3M™ |
| Light Clip | Yes |
| Size | L, M, S |
| Capacity (ml) | L 1100/1400, M 700/900, S 500 |
| Weight (g) | L 114, M 100, S 89 |



NEW!

CS-103FR

It contains a carry handle, a removable shoulder strap, an inner pocket, a big zipped front bag and two side bags. Front rack version, which known as CS-103F, is available. LT-44, the front rack, is recommend for the CS-103F.

| | |
|-------------------|--|
| Bag Attachment | LT-88A1 / LT-88A2 / LT-98 / Velcro Fastening |
| Material | 600D Polyester |
| Zipper | YKK® |
| Reflective Stripe | 3M™ |
| Light Clip | Yes |
| Capacity (ml) | 3900 |
| Weight (g) | 300 |
| Colors | Beige |



SH-142R

Fashionable 2-tone shopping bag pannier. Padded and lined inside. Zipped top closure, zipped front pocket and internal zipped pocket. Comfortable carry handles with snap fastener. Quick release fitting with zipped roll-up protective cover.

| | |
|-------------------|------------------------|
| Bag Attachment | BR, BCR, R, VR |
| Material | Jacquard Weave + Nylon |
| Zipper | YKK® |
| Reflective Stripe | 3M™ |
| Capacity (ml) | 12800 |
| Weight (g) | 910 |
| Colors | Beige/ Dark Bron |



SH-143R

Stylish 2-tone shopping bag pannier. Padded and lined inside. Zipped top closure, zipped front pocket and internal zipped pocket. Shoulder strap can be removed to form a shortened carry handle. Quick release fitting with zipped roll-up protective cover.

| | |
|-------------------|------------------------|
| Bag Attachment | BR, BCR, R, VR |
| Material | Jacquard Weave + Nylon |
| Zipper | YKK® |
| Reflective Stripe | 3M™ |
| Capacity (ml) | 14600 |
| Weight (g) | 1090 |
| Colors | Beige/ Dark Bron |

Quick Release System



SH-142R / SH-143R,
QR systems hidden design.



Basket



BST-01GR

Sturdy steel basket with black plastic coating. Easy-grip handle and quick release handlebar fitting.

| | |
|---------------|----------------------------|
| Attachment | LT-88A1 / LT-88A2 / LT-98 |
| Material | Steel with full PE coating |
| Capacity (ml) | 14400 |
| Weight (g) | 845 |
| Colors | Black |



BST-03R

Genuine wicker basket with wicker-bound steel handle and quick release handlebar fitting.

| | |
|---------------|---------------------------|
| Attachment | LT-88A1 / LT-88A2 / LT-98 |
| Material | Wicker |
| Capacity (ml) | 15600 |
| Weight (g) | 635 |
| Colors | Dark Beige |



NEW!

BSTB-01R

Attractive shopping basket made from tough polyester. Alloy frame with quick release handlebar fitting. Nylon closure with drawstring, webbing handles, front pouch, internal zipped pocket, internal phone pouch and detachable zipped pouch.

| | |
|----------------|---------------------------|
| Bag Attachment | LT-88A1 / LT-88A2 / LT-98 |
| Material | 600D Polyester +70D Nylon |
| Capacity (ml) | 12800 |
| Weight (g) | 650 |
| Colors | Brown |



NEW!

BST-04R

Tough, UV-resistant PE basket with steel mesh base. Easy-grip handle and quick release handlebar fitting. Special design for the folding bicycle.

| | |
|----------------|---------------------------|
| Bag Attachment | LT-88A1 / LT-88A2 / LT-98 |
| Material | PE / Steel |
| Capacity (ml) | 6000 |
| Weight (g) | 760 |
| Colors | White |

Quick Release System



HP-001



LT-88-A2



LT-98

Other bags



NEW!

SH-03WH

SH-03WH is not only a Handlebar bag but also a belt bag. It contains multiple layers so users can easy to find their stuffs.

| | |
|-------------------|---|
| Bag Attachment | Velcro Fastening |
| Material | 600D Polyester + 420D Nylon (Rip-stop) / 1000D Cordura® |
| Zipper | YKK® |
| Reflective Stripe | 3M™ |
| Capacity (ml) | 1000 |
| Weight (g) | 185 |



NEW!

SH-19BT

SH-19BT is a belt bag with a bottle holder. The bottle holder has a special elastic design which can prevent the bottle fall out. Easy to take bottle out during the riding. Besides, there is a zipper pocket for miscellaneous objects.

| | |
|-------------------|---|
| Material | 600D Polyester + 420D Nylon (Rip-stop) / 1000D Cordura® |
| Zipper | YKK® |
| Reflective Stripe | 3M™ |
| Capacity (ml) | 500 |
| Weight (g) | 160 |



NEW!

SH-04LTR

Messenger bag with an internal padded laptop compartment and a range of stationery storage pockets. Zipped pocket in the flap, and 1 zipped pockets at side. LT-88A2 quick release buckle is include, it can be installed on the handlebar as a handlebar bag if needed.

| | |
|----------------|---------------------------------|
| Bag Attachment | LT-88A2 / LT-98 / None |
| Material | 600D Polyester / 1000D Cordura® |
| Zipper | YKK® |
| Capacity (ml) | 12000 |
| Weight (g) | 1120 |



SH-6850L

Messenger bag with an internal padded laptop compartment and a range of stationery storage pockets. Zipped pocket in the flap, document pocket at the back and 2 mesh bottle pockets. Detachable pouch on the shoulder strap for a phone or MP3 player.

| | |
|-------------------|---------------------------------|
| Material | 600D Polyester / 1000D Cordura® |
| Zipper | YKK® |
| Reflective Stripe | 3M™ |
| Capacity (ml) | 23800 |
| Weight (g) | 1040 |



NEW!



SH-9107S

Backpack with large capacity. External zipped pocket, MP3 player pocket with soft lining, and two mesh bottle holders. The bottle holders have a special design which can prevent the bottle fall out.

| | |
|-------------------|---|
| Material | 600D Polyester + 420D Nylon (Rip-stop) / 1000D Cordura® |
| Zipper | YKK® |
| Reflective Stripe | 3M™ |
| Capacity (ml) | 14800 |
| Weight (g) | 600 |

SH-9107

Deluxe backpack with 3D mesh back padding for increased comfort, tough rubber base, padded laptop compartment and bladder compartment. Large padded pouch and a wide range of accessory pockets in the main compartment. Tall zipped front pocket, small external zipped pocket and MP3 player pocket with soft lining. 2 mesh bottle pockets, base pocket with integrated rain cover and detachable phone pouch.

| | |
|-------------------|---|
| Material | 600D Polyester / 420D Nylon (Rip-stop) / Jacquard Weave |
| Zipper | YKK® |
| Reflective Stripe | 3M™ |
| Capacity (ml) | 16200 |
| Weight (g) | 990 |
| Colors | All colors |



SH-890

Workshop apron with multiple-function pockets. Heavy duty cotton with neck strap and back ties.

| | |
|------------|-----------------|
| Material | Cotton |
| Size | L 59cm x H 65cm |
| Weight (g) | 340 |
| Colors | Black |

NEW!



PH-6103XL

PH-6130S

SBR material and soft lining provide protection. Quick release handlebar fitting and integrated belt clip. Can be used for other small portable devices.

| | |
|----------------|---|
| Bag Attachment | LT-01MP / Easy Clip |
| Material | SBR + 420D Nylon (Rip-stop) |
| Weight (g) | XL : 47, S : 40 |
| Design For | XL: Mobile Phone, Small Digital Camera, iPhone S: Mobile Phone |
| Colors | All Colors |

Other bags



SH-803D Single Wheel Bag
SH-803DD Double Wheel Bag

Single wheel bag / Double wheel bag with an internal accessories pocket and Velcro straps for securing the wheels. Large zipped opening and webbing carry handles. Soft padded lining, padded dividing wall, and additional protection for the wheel hubs are available as optional.

| | |
|------------|--|
| Material | 210D Nylon / 420D Nylon / 600D Polyester |
| Zipper | YKK® |
| Weight (g) | Single: 575 Double: 950 |
| Colors | Black |

Extendable



SH-5311FL

Bag for carrying a 20" folding bicycle. Large zipped opening. Extendable layer is available for oversized folding bicycle. Folds into its own compact carry bag that can be fitted under the saddle.

| | |
|------------|---------------------|
| Material | 600D Polyester |
| Extendable | Yes |
| Zipper | YKK® |
| Weight (g) | 855 |
| Design For | 20" Folding bicycle |
| Colors | Black |



SH-5311

Bag for carrying a complete bicycle. Large zipped opening, 2 padded base sections, 3 internal accessories pockets and 2 wheel pockets with protection for the hubs. Includes binding straps and large carry handles. Folds into its own compact carry bag that can be fitted under the saddle.

| | |
|------------|-----------------|
| Material | 600D Polyester, |
| Zipper | YKK® |
| Weight (g) | 1445 |
| Design For | 26" Bicycle |
| Colors | Black |

Extendable



SH-5312FL

Deluxe bag with wheels and towing handle for transporting a complete folding bicycle. Zipped extendable section accommodates larger bikes. Includes thick padding for superior protection, an internal accessories pocket and detachable shoulder strap.

| | |
|------------|---------------------|
| Material | 600D Polyester |
| Extendable | Yes |
| Zipper | YKK® |
| Weight (g) | 2685 |
| Design For | 20" Folding bicycle |
| Colors | Black |



Bike Cover



A-116NP

Nylon bicycle dust cover quickly folds away into its own integrated zipped carry case.

| | |
|------------|------------------|
| Material | 70D Nylon |
| Size | L 176cm x H 91cm |
| Weight (g) | 255 |
| Colors | Black |



A-116L

*PVC waterproof bicycle cover. Protects the bike against sun, rain, dew and dust. Includes a PVC storage pouch. *This bicycle cover has another size for 2 bicycles.*

| | |
|------------|------------------|
| Material | PVC |
| Size | L 200cm x H 83cm |
| Weight (g) | 470 |
| Colors | Silver |



A-116N

Nylon bicycle dust cover folds away into its own carry case.

| | |
|------------|-------------------|
| Material | 70D Nylon |
| Size | L 176cm x H 104cm |
| Weight (g) | 255 |
| Colors | Black |



A-116NW

Bicycle dust cover folds away into its own carry case.

| | |
|------------|-------------------|
| Material | 70D Nylon |
| Size | L 176cm x H 104cm |
| Weight (g) | 295 |
| Colors | Gray |

Hydration Pack



NL-106

Easy-fill hydration pack allows water to be added via a filler cap in the pack, without removing the bladder. Accepts high-neck water bladders up to 2.5L capacity (Water bladder is not included).

| | |
|------------|------------------------------|
| Materia | 1000D Cordura® |
| Zipper | YKK® |
| Weight (g) | 345 |
| Design For | 2.5L High neck water bladder |
| Colors | Military colors |



SH-3107

3-section hydration pack featuring a bladder compartment and 2 zipped storage compartments. External mesh pocket and side straps for attaching a pump. Accepts water bladders up to 2.0L capacity (Water bladder is not included).

| | |
|-------------------|---|
| Materia | 600D Polyester + 420D Nylon (Rip-stop) / 1000D Cordura® |
| Zipper | YKK® |
| Reflective Stripe | 3M™ |
| Capacity (ml) | 2700 |
| Weight (g) | 235 |
| Design For | 2.0L Water Bladder |
| Colors | All colors |



SH-3106

2-section hydration pack featuring a bladder compartment and large zipped storage compartment. An external mesh pocket allows fast access to loose items. Accepts water bladders up to 2.0L capacity (Water bladder is not included).

| | |
|-------------------|---|
| Materia | 600D Polyester + 420D Nylon (Rip-stop) / 1000D Cordura® |
| Zipper | YKK® |
| Reflective Stripe | 3M™ |
| Weight (g) | 300 |
| Design For | 2.0L Water Bladder |
| Colors | All colors |



SH-6108K2

Hydration pack with 3D mesh back padding. Large storage compartment with an internal pocket and pouch for a 2.0L bladder. Zipped front pocket with an internal mesh pouch and key hook. External mesh pocket and bungee cord for securing a helmet (Water bladder is not included).

| | |
|-------------------|--|
| Materia | 600D Polyester + 420D Nylon (Rip-stop) |
| Zipper | YKK® |
| Reflective Stripe | 3M™ |
| Capacity (ml) | 6200 |
| Weight (g) | 360 |
| Design For | 2.0L Water bladder |
| Colors | All colors |



Other Accessories

WT-102-V2C1

2.5L water bladder with tube and bite valve. It also includes loop for hanging to dry and slots for attaching to a hydration pack. The high-neck filling port, tube cover, bladder hangers, bladder cleaning kit are the optional accessories for the water bladder.

| | |
|------------|-----------------|
| Material | TPU |
| Size | W 17cm x H 46cm |
| Volume (L) | 2.5L |



WT-202-V2C1

2.0L water bladder with tube and bite valve. It also includes loop for hanging to dry and slots for attaching to a hydration pack. The high-neck filling port, tube cover, bladder hangers, bladder cleaning kit are the optional accessories for the water bladder.

| | |
|------------|-----------------|
| Material | TPU |
| Size | W 17cm x H 39cm |
| Volume (L) | 2.0L |



WT-502-V2C1

1.5L water bladder with tube and bite valve. It also includes loop for hanging to dry and slots for attaching to a hydration pack. The high-neck filling port, tube cover, bladder hangers, bladder cleaning kit are the optional accessories for the water bladder.

| | |
|------------|-----------------|
| Material | TPU |
| Size | W 17cm x H 36cm |
| Volume (L) | 1.5L |



WT-402-V2C1

1.0L water bladder with tube and bite valve. It also includes loop for hanging to dry and slots for attaching to a hydration pack. The high-neck filling port, tube cover, bladder hangers, bladder cleaning kit are the optional accessories for the water bladder.

| | |
|------------|-----------------|
| Material | TPU |
| Size | W 15cm x H 27cm |
| Volume (L) | 1.0L |



WT-34

Bladder cleaning kit comprising 2 brushes for cleaning the reservoir, tube and valve.

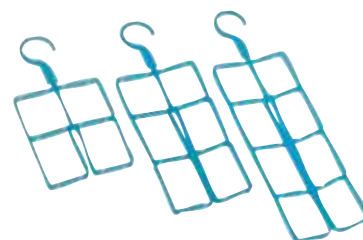
| | |
|------------|--|
| Material | Stainless steel, Durable nylon bristle |
| Weight (g) | 75 |
| Design For | Water bladder |



WT-33

Bladder hanger available in small, medium and large sizes. Collapsible design for easy insertion through the filling port. Allows the bladder to keep its shape while hanging for fast and effective drying.

| | |
|------------|---|
| Material | PP |
| Size | L 13cm x 30.5cm, M 13cm x 23cm, S 13cm x 15cm |
| Weight (g) | L 52, M 41, S 29 |
| Design For | Water bladder |



WT-B01

Tough polycarbonate water bottle. Microban® anti-bacterial material has been added to the bottle, cover and bite valve.

| | |
|---------------|--------------------|
| Material | PC (GE LEXAN 144R) |
| Capacity (ml) | 500, 750 |



WT-44

LED Light Tube. It contains 1 red LED safety light with flashing / steady modes and light tube. The light tube is able to pass light from LED to its end.

| | |
|----------|---------------|
| Material | TPU + LED Set |
|----------|---------------|



NEW!

Quick Release System



LT-25



PAT.

NEW!



The features of LT-25 are small, light weight, and easy to use

| | |
|------------------------|-------------|
| Material | Nylon |
| Carrying Capacity (kg) | 2 |
| Designed For | Saddle bags |

LT-29



PAT.

NEW!



The features of LT-29 are small, light weight, and easy to use.

| | |
|------------------------|-------------|
| Material | Nylon |
| Carrying Capacity (kg) | 2 |
| Designed For | Saddle bags |

LT-27



PAT.



The features of LT-27 are tool-less, light weight, and easy to use. Users only need to oblique the saddle bag to the bottom-center of saddle and twist it back to the normal position for installation, reverse the steps for the removal.

| | |
|------------------------|-------------|
| Material | Nylon |
| Carrying Capacity (kg) | 2 |
| Designed For | Saddle bags |

LT-25W



PAT.

LT-25W is a special designed for the comfort saddle bag.

| | |
|------------------------|-------------|
| Material | Nylon |
| Carrying Capacity (kg) | 2 |
| Designed For | Saddle bags |

LT-01MP

LT-01MP is designed for the cell phone bag. It is not only having a function of changing direction but also can be separated from main buckle to fit on the belt or backpack.



PAT.

| | |
|------------------------|----------------|
| Material | Nylon |
| Fitting Range | 22.2mm ~31.8mm |
| Carrying Capacity (kg) | 1 |
| Designed For | Cell Phone Bag |

LT-25P

LT-25P is designed as an extended part of LT-25. Only use it when the saddle is too big or the bottom side of saddle has too much space.



PAT.

| | |
|--------------|-------------|
| Material | Nylon |
| Designed For | Saddle bags |

LT-28

The features of LT-28 are tool-less, light weight, and easy to use. LT-28 can be fit in any type of saddle. The guarantee period of rubber parts is 2 years; they can be replaced by hand easily.



PAT.



| | |
|------------------------|-------------|
| Material | Nylon |
| Carrying Capacity (kg) | 2 |
| Designed For | Saddle bags |

LT-28-OB

LT-28-OB is designed for bags or other accessories to hold on the seat post or the handlebar. It also has the functions of tool-less, light weight, and easy to use. The guarantee period of rubber part is 2 years; it can be replaced by hand easily.



PAT.

| | |
|------------------------|---------------------------|
| Material | Nylon |
| Carrying Capacity (kg) | 2 |
| Designed For | Saddle Bag, Handlebar Bag |



PAT.

NEW!



LT-98

It is not only strong and stable but also very easy to use. LT-98 light stand is available as an optional item. Users will have an extra space for the front light and other accessories.

| | |
|------------------------|-----------------------|
| Material | Nylon |
| Fitting Range | 22.2mm ~ 31.8mm |
| Carrying Capacity (kg) | 4 |
| Designed For | Handlebar Bag, Basket |



PAT.

LT-88-A1

It is not only strong and stable but also very easy to use. Users only need 1 second to click the bag/basket on the LT-88A1, and another second to take bag/basket off.

| | |
|------------------------|-----------------------|
| Material | Nylon |
| Fitting Range | 22.2mm ~ 25.4mm |
| Carrying Capacity (kg) | 4 |
| Designed For | Handlebar Bag, Basket |



PAT.



LT-88-A2

It is not only strong and stable but also very easy to use. Users only need 1 second to click the bag/basket on the LT-88A2, and another second to take bag/basket off.

| | |
|------------------------|-----------------------|
| Material | Nylon |
| Fitting Range | 22.2mm ~ 31.8mm |
| Carrying Capacity (kg) | 4 |
| Designed For | Handlebar Bag, Basket |



LT-30

LT-30 is designed for the pannier. The features of LT-30 are easy to click on and easy to removal.

| | |
|------------------------|------------------------------|
| Material | Nylon, Steel with PU coating |
| Carrying Capacity (kg) | 7 |
| Designed For | Pannier |



PAT.

LT-30B

LT-30B is a fixed component of LOTUS' quick release systems.

| | |
|------------------------|--------------------|
| Material | Nylon |
| Carrying Capacity (kg) | 3 |
| Designed For | Pannier, Trunk Bag |



PAT.

LT-31

LT-31 is designed to fix pannier at the side frame of rack.

| | |
|--------------|---------|
| Material | Nylon |
| Designed For | Pannier |



PAT.

NEW!

LT-31DP

LT-31DP is designed to fix pannier at the side frame of rack. It is 4-ways adjustable, thus, users can easy to fit the bag to rack.

| | |
|--------------|---------|
| Material | Nylon |
| Designed For | Pannier |

Quick Release System



NEW!

LT-44

Alloy front carrier. It has alloy tube frame, wire stays and adjustable bracket. It has to be fixed with the V brake pivots.

| | |
|------------------------|------------------------|
| Material | Alloy |
| Carrying Capacity (kg) | 9 |
| Designed For | Front Rack Bag, Basket |



PAT.

NEW!

HP-001

HP-001 is designed as a part of QR system for handlebar bag and basket. It must be used with LT-88A1, LT-88A2, or LT-98 QR system. Strong structure, light weight and easy to using are its features.

| | |
|--------------|-----------------------|
| Material | Aluminum |
| Designed For | Handlebar Bag, Basket |



PAT.

NEW!

LT-43

LT-43 is designed for the trunk bag. The features are light weight, strong, stable, and easy to use. It can be separated to two parts; therefore, users only need to carry frame part with bag when you leave your bike.

| | |
|------------------------|-----------------|
| Material | Nylon, Aluminum |
| Fitting Range | 22.2mm ~ 31.6mm |
| Carrying Capacity (kg) | 5 |
| Designed For | Trunk Bag |



PAT.

LT-40RB

A quick release rack, which integrates the function of LT-40B, has the following features, such as strong, light weight and easy to use.

| | |
|------------------------|--------------------|
| Material | Aluminum |
| Fitting Range | 22.2mm ~ 31.6mm |
| Carrying Capacity (kg) | 5 |
| Designed For | Trunk Bag, Pannier |



PAT.

LT-40A+LT-40B

LT-40A and LT-40B quick release system are designed as a mounting system for the trunk bags. It is very safe, strong, and easy to use. It only needs one second to install or release. LT-40B is for bicycles which have a rack already; LT-40RB is advised for the bikes, which do not have a rack yet.

| | |
|------------------------|-----------|
| Material | Nylon |
| Carrying Capacity (kg) | 10 |
| Designed For | Trunk Bag |

Bike Wear

MTP-001

Cycling jersey and short for men.

| | |
|-------------------|-------------------------------------|
| Material | Lycra® + Polyester |
| Reflective Stripe | 3M™ |
| XXL | Jersey: 42" ~ 43", Short: 36" ~ 38" |
| XL | Jersey: 40" ~ 41", Short: 34" ~ 36" |
| L | Jersey: 39" ~ 40", Short: 32" ~ 34" |
| M | Jersey: 37" ~ 38", Short: 30" ~ 32" |

FTP-001

Cycling jersey and short for women.

| | |
|-------------------|-------------------------------------|
| Material | Lycra® + Polyester |
| Reflective Stripe | 3M™ |
| XXL | Jersey: 38" ~ 40", Short: 29" ~ 31" |
| XL | Jersey: 36" ~ 37", Short: 27" ~ 29" |
| L | Jersey: 33" ~ 35", Short: 25" ~ 27" |
| M | Jersey: 31" ~ 32", Short: 23" ~ 25" |

It has not only great anti-UV function but also able to keep body dry when riding bicycle. The short made by anti-bacterial material, and also contains a comfortable pad.

Color Chart

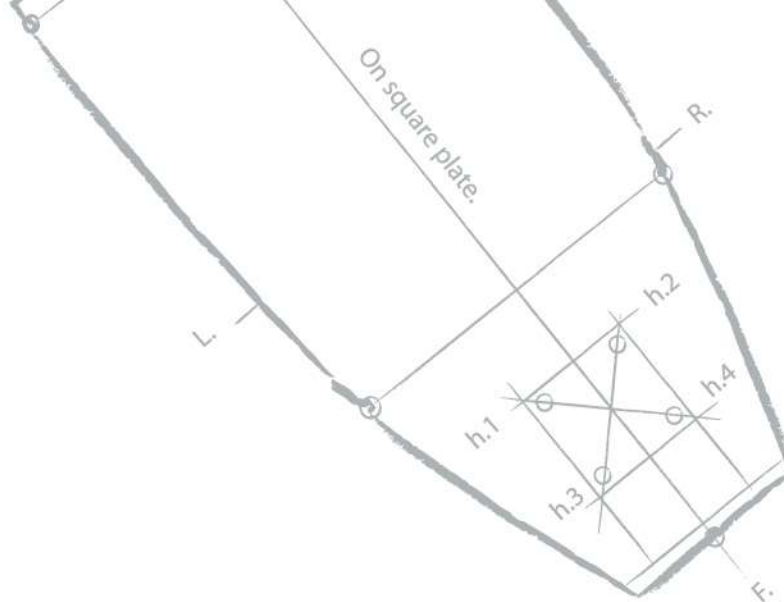


Material List

| MATERIAL | FEATURES |
|-----------------------|---|
| 70D Nylon | <ul style="list-style-type: none"> • PU Coating • Water-Resistant |
| 210D Nylon | <ul style="list-style-type: none"> • PU Coating • Water-Resistant |
| 420D Nylon (Rip-Stop) | <ul style="list-style-type: none"> • PU Coating • Water-Resistant |
| 420D Nylon | <ul style="list-style-type: none"> • PU Coating • Water-Resistant |
| 6000D Nylon | <ul style="list-style-type: none"> • PU Coating • Water-Resistant • High water pressure-resistant |
| 1000D Nylon | <ul style="list-style-type: none"> • PU Coating • Resistant to abrasions, tears, scuffs, and punctures • Rugged durability and lightweight strenght • Cordura label and swing tag are available |
| 1682D Nylon | <ul style="list-style-type: none"> • PVC Coating • Water-Resistant • Waterproof |
| PVC | <ul style="list-style-type: none"> • Pass EN-71 Test |
| PVC Leather | <ul style="list-style-type: none"> • Water-Resistant • Waterproof Abrasions-Resistant |
| 9oz Cotton | <ul style="list-style-type: none"> • No Coating / PU Coating, depends on products |
| 12oz Cotton | <ul style="list-style-type: none"> • No Coating / PU Coating, depends on products |
| TPU | <ul style="list-style-type: none"> • Environmental-friendly Material |
| PU | <ul style="list-style-type: none"> • Recyclable Material |
| Jacquard weave | <ul style="list-style-type: none"> • PU coating / PVC coating, depends on products |

D=Denier

SHINE-HO reserved the right to change specifications without notice.



SHINE-HO KNAPSACK & BAG MFG. CO., LTD.

Head office:

11F., No.294, Sec. 2, Donghua St., Beitou District,
Taipei City 112, Taiwan (R.O.C.)

TEL: +886-2-2827-5488

FAX: +886-2-2827-5499

Email: info@lotus-bag.com.tw

Factory:

No.10, Anlin Rd., Situn District,
Taichung City 407, Taiwan (R.O.C.)

TEL: +886-4-2461-2299

FAX: +886-4-2465-3366

Email: sales@lotus-bag.com.tw

www.lotus-bag.com.tw

