

Ride Free!

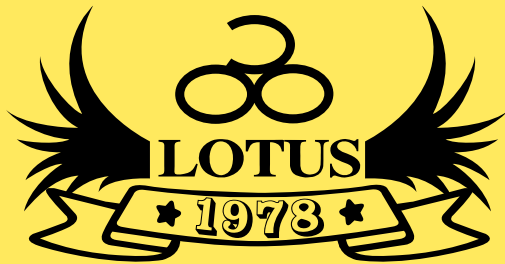




35TH ANNIVERSARY



History



As we celebrate our **35th** year in business, we would like to say thank you to both past and present customers. This is a big milestone for us; we could not make this happen without you. We will keep improving our service and making all customers satisfied. We also hope to be survived for the next 35 years and look forward for your continued support.

1978

- Shine-Ho was established by Julio Ho. LOTUS, the brand name of Shine-Ho, was created at same time.
- Shine-Ho got first big order from TRUMPH via KENLIGHT.

1979

- Shine-Ho got orders form WSI via ARROW, it was the time which we began to produce high quality products.

1980

- SCHWINN placed orders to Shine-Ho via AFS.

1984

- WSI created new brand name, AVENIR, and placed orders to Shine-Ho via RAMIKO. After RALEIGH took over AVENIR, they continued to place orders to us till now.

1986

- Shine-Ho got orders from DECATHLON.
- Shine-Ho began to have partnership with BALENA.

1991

- Shine-Ho cooperated with BLACKBURN via BETO.

1997

- SCHWINN placed orders to Shine-Ho via TOPEAK
- Shine-Ho invented a great handlebar mounting system, LT-58.

1998

- HALFORDS placed its 1st orders to Shine-Ho.

2000

- Shine-Ho sold baskets to TARGET via BETO
- Shine-Ho got an order from Mercedes-Benz for bike bags via PAUL LANGE and ACCORD.

2006

- Shine-Ho got orders from FUJI via IDEAL.

2007

- Shine-Ho invented a great handlebar mounting system, LT-88A2.

2008

- The anniversary of 30 years.
- Shine-Ho developed whole new waterproof bags.
- Shine-Ho also started to cooperate with Serfas.
- Shine-Ho passed ISO 9001:2000 qualification.

2009

- Shine-Ho started to cooperate with CROPS in the Japan and Asia market.
- Shine-Ho designed new quick release mounting system for saddle bags, LT-29.
- Shine-Ho designed new quick release mounting system for trunk bags, LT-43.
- Shine-Ho passed ISO 9001:2008 qualification.

2010

- LOTUS has announced its own brand which known as LTG (Lotus Technology Gear).
- Shine-Ho invented a new generation of handlebar mounting system, LT-98.

2011

- Lotus obtains MIT qualification.

2012

- Improve the handlebar mounting system of LT-98.

2013

- LOTUS **35th** Anniversary.





Ride Free

LOTUS

At Shine-Ho, we strive to lead in the innovation, quality and fabrication of the industry's most advanced cycling bags and related accessories. Our target is to deliver high value products and professional solutions to our worldwide customers. Shine-Ho was founded by Mr. Julio Ho in 1978, originally specializing in bicycle bags under the LOTUS brand name. The range of products has extended to knapsacks, sporting bags, hydration systems, kid bags and pet bags now. In 1979, we produced a line of high quality cycling bags for WSI. It was the first in a series of manufacturing contracts, which later included other well-known brand names in the bicycle industry, such as Schwinn, Service Cycle, Raleigh, Black Burn, Halfords, Giant, KHS, Serfas, Force, and Crops. We even manufactured bicycle bags and / or knapsack for Mercedes Benz, BMW and Ferrari. These days, we produce not only high quality bags at our manufacturing base in Taiwan, but also focus on research and development to meet our customers' needs.



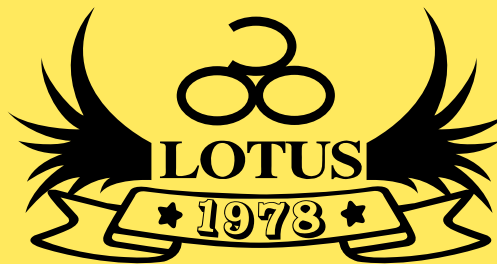
ISO9001
USC-Q-10-101



Quality Management
QC011

CONTENT

Multi-Function Bag	2-3
Saddle Bag	4-5
Handlebar Bag	6-7
Pannier	8-9
Trunk Bag	10-11
Top Tube Bag	12-13
Waterproof Bag, Bike Carrying Bag	14-15
Other Bags	16-17
Bike Cover	18
Hydration Pack & Accessories	19
Pet Bag, Children bag	20-21
Quick Release System	22-24
Color chart & Material List	25





LT-98 QR system



New

Hidden QR system

SH3-03BP

Handlebar Bag / Backpack

Special backpack, which is designed for two ways of using, can either be a backpack or a handlebar bag. With handlebar QR system, users can take off or install the bag on bicycle in seconds. The main bag has big capacity; it includes a tablet/laptop layer. There is also a side pocket for miscellaneous objects and 2 holding webbing for raincoat or jacket.

Available Attachment	LT-98
Material	600D Polyester + Cotton
Capacity (ml)	10200
Weight (g)	720
Size (cm)	L27 x W12 x H36



Front layer for tool set



Hidden bottle holder



Trunk bag form



New

SH3-06BP

Trunk Bag / Single Shoulder Bag

Special trunk bag which can be used in 2 ways, either trunk bag or single shoulder bag. It contains a big main pocket with a layer for tablet or small laptop. The front pocket includes a mesh pocket, pump holder, tire holder, and tool holder. It also has a hidden bottle hold at side.

Available Attachment	Velcro Fastening
Material	600D Polyester + Cotton
Capacity (ml)	9300
Weight (g)	535
Size (cm)	L34 x W13 x H22



Backpack form



Pannier form



LOTUS CLASSIC

Hidden QR system

CIS-1109B

Pannier / Backpack

A pannier that converts into a stylish backpack. This bag has a large inner compartment and 2 outer pockets. This bag comes with an integrated carry handle and leather accents.

Available Attachment	BR / BCR / R / VR
Material	Polyester + PU Leather
Capacity (ml)	18400
Weight (g)	1350
Size (cm)	L29 x W27 x H39

Multi-Function Bag



SH-142 S / L

Pannier / Hand Bag

Fashionable 2-tone shopping bag pannier. Padded and lined inside. Zipped top closure, zipped front pocket and internal zipped pocket. Comfortable carry handles with snap fastener. Quick release fitting with zipped roll-up protective cover.



Available Attachment	BR, BCR, R, VR
Material	Jacquard Weave + Nylon + Polyester
Capacity (ml)	12800
Weight (g)	910
Size (cm)	L43 x W17 x H46.5



SH-143 S / L

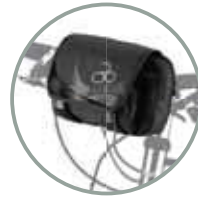
Pannier / Shoulder Bag

Stylish 2-tone shopping bag pannier. Padded and lined inside. Zipped top closure, zipped front pocket and internal zipped pocket. Shoulder strap can be removed to form a shortened carry handle. Quick release fitting with zipped roll-up protective cover.



Adjustable shoulder strap

Available Attachment	BR, BCR, R, VR
Material	Jacquard Weave + Nylon + Polyester
Capacity (ml)	14600
Weight (g)	1090
Size (cm)	L32 x W16 x H52



Handlebar bag form



SH2-03WH

Handlebar Bag / Waist Bag

Handlebar bag, which has multiple zipped layers, can store stuffs well organized. This bag can be used as a waist bag as well. Hidden handlebar mounting system is included.

Available Attachment	Velcro Fastening
Material	600D Polyester, PU leather
Capacity (ml)	1050
Weight (g)	190
Size (cm)	L20 x W10 x H13

Waist strap



SH2-104H

Pannier Bag / Messenger Bag

Asymmetric pannier is designed to use in two ways, pannier and messenger. Left side of pannier can be separated from the other side and use it as a messenger bag and right side of pannier remains on the rack. Messenger bag contains laptop layer, hidden shoulder strap and skidproof back padding.



Hidden hook and skidproof padding



Messenger Bag

Available Attachment	Straps and Hooks Attachment
Material	600D Polyester, PU leather
Capacity (ml)	8200 (Messenger bag), 10700 (Pannier)
Weight (g)	740 (Messenger bag), 625 (Pannier)
Size (cm)	L36 x W13 x H26 (Messenger bag), L36 x W13 x H27 (Pannier)



New



SH3-01R

The big mouth saddle bag 2.0. Big opening design for easy access, a mesh pocket inside and an elastic strap for holding small item.

Available Attachment	LT-27/LT-29/Velcro Fastening
Material	600D Polyester + Tarpaulin
Capacity (ml)	SR 500, XSR 200
Weight (g)	SR106, XSR 81
Size (cm)	SR L16 x W7.5 x H9, SR L14 x W6 x H6.5
Extendable	No
Light Clip	Yes

New



SH3-0111R

Aero-dynamic saddle bag includes two pockets at sides; left pocket has big capacity in order to store items, right pocket designs for holding tools.

Available Attachment	LT-27/LT-29/Velcro Fastening
Material	600D Polyester + PVC leather
Capacity (ml)	SR 300, XS 200
Weight (g)	SR 90, XS 65
Size (cm)	SR L14 x W9.5 x H6, XS L13 x W8 x H5.5
Extendable	No
Light Clip	Yes

SH2-111R

Aero-dynamic saddle bag includes mesh layers, and two pockets at sides with different capacity for multiple purpose use. It suits folding bikes perfectly.

Available Attachment	LT-25
Material	600D Polyester, PU leather, Tarpaulin
Capacity (ml)	800
Weight (g)	115
Size (cm)	L11 x W15 x H15
Extendable	No
Light Clip	Yes



CIS-10F Saddle bag



CIS-10FT Tools saddle bag

LOTUS CLASSIC

CIS-10F / CIS-10FT

Roll up saddle bag for your personal items. It can carry a cell phone, ID cards, tools and cash. CIS-10FT. Roll up tool saddle bag, it is designed for tools.

Available Attachment	Strap with Snap
Material	Polyester, PU Leather
Capacity (ml)	1200
Weight (g)	221
Size (cm)	L21 x W7.5 x H7.5 (Extend) L21 x W3 x H33 (Storage)
Extendable	No
Light Clip	No



STO-6702R

Mid-sized saddle bag with clear sides to make finding gear easier.

Available Attachment	LT-27 / LT-29 / Velcro Fastening
Material	600D Polyester + PVC / 1000D Cordura®+600D polyester
Capacity (ml)	L 750, M 650, S 450
Weight (g)	L 109, M 93, S 78
Size (cm)	L L19.5 x W10 x H10 M L17.5 x W8.5 x H12.5 S L15.5 x W7.5 x H10.5
Extendable	No
Light Clip	Yes

LOTUS CLASSIC

SH-6702R

Aero-dynamic designs with water resistance and wear resistance materials which increase its practicability.

Available Attachment	LT-27 / LT-28 / LT-29 / LT-29 + LT-28OB / Velcro Fastening
Material	600D Polyester, 420D Nylon (Rip-stop) / 1000D Cordura®
Capacity (ml)	L 1200 M 700, S 500
Weight (g)	L 175, M 134, S 90
Size (cm)	L L22 x W10 x H12.5 M L20 x W8.5 x H10.5 S L17 x W8 x H10
Extendable	No
Light Clip	Yes





SH-5401R

Available with an inner mesh pocket for small accessories. Zipped base extends to increase the storage.

Available Attachment	LT-25 / LT-27 / LT-29 / Velcro Fastening
Material	600D Polyester + 420D Nylon (Rip-stop) / 1000D Cordura®
Capacity (ml)	L 1100/1500, M 700/1000, S 400
Weight (g)	L 134, M 106, S 85
Size (cm)	L L20 × W11 × H11.5 M L17.5 × W9 × H10 S L15 × W9 × H8
Extendable	Large and Medium size only
Light Clip	Yes



SH-5401P

LOTUS classic saddle bag. It has racing style and convenient Available Attachment design.

Available Attachment	Velcro Fastening
Material	600D Polyester
Capacity (ml)	500
Weight (g)	70
Size (cm)	L16 × W9 × H9.5
Extendable	No
Light Clip	Yes



SH-5701R

Classic wedge saddle bag, which uses water resistance and wear resistance materials with 3M reflective strap for increasing its practicability and safety issue.

Available Attachment	LT-25 / LT-27 / LT-29 / Velcro Fastening
Material	600D Polyester + 420D Nylon (Rip-stop) / 1000D Cordura®
Capacity (ml)	L 1100/1400, M 700/900, S 500
Weight (g)	L 114, M 100, S 89
Size (cm)	L L17 × W10.5 × H11 M L15.5 × W10.5 × H9 S L14.5 × W8.5 × H7.5
Extendable	Large and Medium size only
Light Clip	Yes



SH-702R

Molded EVA with 1682D Nylon. Wear resistance material with a specially designed mounting system that can be fit on any kind of saddle.

Available Attachment	LT-28
Material	Eva w/1682D Nylon backing
Capacity (ml)	L 1000, M 600, S 400
Weight (g)	L 125, M 118, S 98
Size (cm)	L L21 × W13 × H8.5 M L16.5 × W11 × H6.5 S L14.5 × W9 × H6
Extendable	No
Light Clip	Yes



SH-903TR

An inner mesh pocket for small accessories. Two outer pockets for cycle tools. (Multi-tool, glue less patch, and three tire levers are available as optional items.)

Available Attachment	LT-25 / LT-27 / LT-29 / Velcro Fastening
Material	600D Polyester + PVC Leather
Capacity (ml)	800/1000
Weight (g)	170
Size (cm)	L20 × W11 × H10
Extendable	Yes
Light Clip	Yes



SH-9702R

Globefish saddle bag. Big capacity with 3M™ reflective material which increases safety at night riding. Quick release mounting system allows user easy to install and remove the saddle bag.

Available Attachment	LT-25 / LT-27 / LT-29 / Velcro Fastening
Material	600D Polyester + 420D Nylon (Rip-stop) / 1000D Cordura®
Capacity (ml)	L 1000, M 800, S 600
Weight (g)	L 130, M 116, S 98
Size (cm)	L L15 × W9 × H8.5 M L16.5 × W9.5 × H9.5 S L18 × W10 × H10
Extendable	No
Light Clip	Yes



SH-10 / SH-10Y

Cylinder saddle bag. Soft padding inside is for better protection. It is available to be used as a handlebar bag with two extra holders.

Available Attachment	Velcro Fastening
Material	600D Polyester + 420D Nylon (Rip-stop) / 1000D Cordura®
Capacity (ml)	1800
Weight (g)	105
Size (cm)	L20 × W13 × H13
Extendable	No
Light Clip	Yes



SH3-10H

Cylinder saddle bag. It has a transparent layer at front for smart phone. Soft padding inside is for better protection. It is available to be used as a handlebar bag with two extra holders.

Available Attachment	Velcro Fastening
Material	600D Polyester + PVC leather
Capacity (ml)	1600
Weight (g)	120
Size (cm)	L20 × W9 × H13.5





For 1 camera with 2 lens

SH-103DR

A handlebar bag designed to carry your camera. The padded interior protects your equipment while multiple compartments make storing accessories such as a flash, memory cards and an extra battery. This bag also comes with a shoulder strap, a rain cover, and quick release mounting system.



Available Attachment	LT-98
Material	600D Polyester
Capacity (ml)	7200
Weight (g)	725
Size (cm)	L37 x W19 x H18.5
Light Clip	YES

SH2-103DR

Deluxe handlebar bag contains two side pockets, adjustable partition, adjustable shoulder strap and extra foam protection design in order to keeps stuff safe.



Available Attachment	LT-98
Material	600D Polyester + Tarpaulin
Capacity (ml)	5600
Weight (g)	515
Size (cm)	L35 x W15.5 x H21
Light Clip	No

New

SH3-04WR

Handlebar bag contains a wide open zipped main compartment. It also has a map case, front zipped pocket, adjustable shoulder strap and two bottle pockets.



Available Attachment	LT-98/Velcro Fastening
Material	600D Polyester + PVC leather
Capacity (ml)	7700
Weight (g)	590
Size (cm)	L25.5 x W14.5 x H12

SH2-103CSR

Handlebar bag contains a wide open zipped main compartment. It also contains map case, front zipped pocket, adjustable shoulder strap and two bottle pockets.



Available Attachment	LT-98 / Velcro Fastening
Material	600D Polyester, PU leather, PVC
Capacity (ml)	4000
Weight (g)	360
Size (cm)	L26 x W15 x H20

SH2-103R

Handlebar bag contains a wide open zipped main compartment, adjustable shoulder strap and two bottle pockets. It is designed for the short journey.



Available Attachment	LT-98 / Velcro Fastening
Material	600D Polyester, Nylon, PU leather, Tarpaulin
Capacity (ml)	4200
Weight (g)	410
Size (cm)	L22 x W11 x H25

Handlebar Bag



CS-103F + LT-44 Front Carrier



CS-103 F / CS-103FR

It contains a carry handle , a removable shoulder strap, an inner pocket, a big zipped front bag and two side bags. Front rack version, which known as CS-103F, is available. LT-44, the front rack, is recommend for the CS-103F.

Available Attachment	LT-88A1 / LT-88A2 / LT-98 / Velcro Fastening
Material	420D Nylon
Light Clip	Yes
Capacity (ml)	3900
Weight (g)	300
Size (cm)	L23 x W14 x H22



SH-9103R

SH-9103R contains a shoulder strap, a map case on the top, a cell phone pouch and a bottle holder at the sides. It is designed for the short journey.

Available Attachment	LT-98 / Velcro Fastening
Material	600D Polyester + 420D Nylon (Rip-stop) / 1000D Cordura®
Capacity (ml)	4200
Weight (g)	265
Size (cm)	L25 x W13 x H20



STO-1503R

This handlebar bag has a semi-rigid inner compartment, 2 zipped side pockets, and a zipped front pocket. It also has a removable shoulder strap, carry handle, and our quick-release mounting system.

Available Attachment	LT-98
Material	1000D Cordura®+ 600D Polyester
Capacity (ml)	5800
Weight (g)	510
Size (cm)	L35,5 x W17 x H19



SH-6404R

Designed for long distance traveling, it has a bottle holder, a mobile phone pocket, a shoulder strap and a map case. It has large capacity for everything you need on a long distance trip.

Available Attachment	LT-98 / Velcro Fastening
Material	600D Polyester + 420D Nylon (Rip-stop) / 1000D Cordura®
Capacity (ml)	7600
Weight (g)	500
Size (cm)	L39 x W19 x H23



SH-503R

SH-503R is a medium size handlebar bag. It is designed for long distance trip. It comes with two side bags, a front bag, a map case and an adjustable shoulder strap.

Available Attachment	LT-98 / Velcro Fastening
Material	600D Polyester + 420D Nylon (Rip-stop) / 1000D Cordura®
Capacity (ml)	6000
Weight (g)	465
Size (cm)	L30 x W22 x H22



SH-8404R

Handlebar bag with rigid foam-lined walls for protection and movable divider to help organize accessories. Large zipped front pocket, bottle holder, mesh side pocket and detachable map case, carry handle and detachable shoulder strap.

Available Attachment	LT-98 / Velcro Fastening
Material	600D Polyester + 420D Nylon (Rip-stop) / 1000D Cordura®
Capacity (ml)	6000
Weight (g)	520
Size (cm)	L33 x W19 x H22





New

SH3-144

Single shopping pannier. It has a quick release rack fitting, webbing carry handles and two front pockets. A zipped top closure design protects contents. The internal zipped pocket designs for important items. An inner frame holds its shape. With detachable shoulder strap, users are able to carry bag when not riding bicycle. Folds flat when not in use.



SH3-144-2

SH3-144-1

Available Attachment	BR / BCR / R / VR / CR / CCR / CVR
Material	600D Polyester+ PVC Leather + Nylon / 600D Polyester + Cotton + Nylon
Capacity (ml)	16800
Weight (g)	810
Size (cm)	L32 x W20 x H29.5



Pannier mounting system (BR)

CIS-1109S

A fold top pannier with a large inner compartment and a small zipped pocket. It also comes with a detachable shoulder strap, integrated carry handle and our quick release mounting system.



Available Attachment	BR / BCR / R / VR / CR / CCR / CVR
Material	Polyester + PU Leather
Capacity (ml)	16400
Weight (g)	808
Size (cm)	L37 x W13.5 x H42

New

SH3-6144

Single fashion pannier. It has a big front pocket, quick release rack fitting and webbing carry handle. A zipped top closure design protects contents. The internal zipped pocket designs for important items. With detachable shoulder strap, users are able to carry bag when not riding bicycle. Folds flat when not in use.



Tote bag style



Available Attachment	BR / BCR / R / VR / CR / CCR / CVR
Material	Cotton
Capacity (ml)	18900
Weight (g)	785
Size (cm)	L28 x W18 x H39

STO-1309S

These mid-sized panniers come with a zipped main compartment and a small zipped pocket inside. It also has a detachable shoulder strap and our quick release mounting system.



Available Attachment	BR / BCR / R / VR / CR / CCR / CVR
Material	1000D Cordura® + 600D Polyester
Capacity (ml)	7800
Weight (g)	1473
Size (cm)	L28 x W14 x H33 (One Side)



SH2-104D

Pannier with strong foam reinforcement, large capacity, joined middle section and carry handle. It can be fold to flat when need.

Available Attachment	Straps and Hooks Attachment
Material	600D Polyester, PU leather, Tarpaulin
Capacity (ml)	19200
Weight (g)	1770
Size (cm)	L32 x W32.5 x H14 (One Side)



SH2-104E

Two large capacity pannier bags with front zipped pockets, joined middle section and carry handle.

Available Attachment	Straps and Hooks Attachment
Material	600D Polyester, PU leather, Tarpaulin
Capacity (ml)	25000
Weight (g)	1015
Size (cm)	L32.5 x W18.5 x H29.5 (One Side)



Rain Cover

SH-809

Drawstring closure with elasticized lid and buckle fastening. Large front pocket and tall side pocket. An integrated hi-visibility nylon rain cover with elasticized seal is stored in a pocket on the base.

Available Attachment	BR / BCR / R / VR / CR / CCR / CVR
Material	600D Polyester + 420D Nylon (Rip-stop) / 1000D Cordura®
Capacity (ml)	36800
Weight (g)	1280
Size (cm)	L32 x W20 x H40 (One Side)



SH-409

Large main compartment has a drawstring closure with elasticized lid and buckle fastening. Large zipped pockets on the front and side. Straps with buckles on top for attaching loose items.

Available Attachment	BR / BCR / R / VR / CR / CCR / CVR
Material	600D Polyester + 420D Nylon (Rip-stop) / 1000D Cordura®
Capacity (ml)	36800
Weight (g)	1320
Size (cm)	L38 x W19 x H37 (One Side)



SH-309 S / L

Drawstring closure with elasticized lid and buckle fastening. A large front pocket and 2 mesh side pockets allows users to pack a lot of gear.

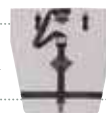
Available Attachment	BR / BCR / R / VR / CR / CCR / CVR
Material	600D Polyester + 420D Nylon (Rip-stop) / 1000D Cordura®
Capacity (ml)	L 34800, S 19600
Weight (g)	L 1145, S 940
Size (cm)	L L32 x W20 x H38 (One Side) S L28 x W18 x H30 (One Side)



SH-104P

1-piece classic design featuring 2 large capacity pannier bags with a joined middle section and carry handle. Tall zipped main compartment and zipped front pocket on each bag.

Available Attachment	Straps and Hooks Attachment
Material	600D Polyester / 1000D Cordura®
Capacity (ml)	26000
Weight (g)	700
Size (cm)	L34 x W20 x H28 (One Side)



Rain Cover

Rain Cover is available as an optional item for all saddle bags.



Pump holder



Big capacity



SHE-06

Lined and padded interior with movable divider and zipped mesh compartment in the lid. Pump Available Attachments on the base. Alloy frame with quick release fitting attaches to the seat post(LT-43, or LT-43C), (Pump is not included).

Available Attachment	LT-43
Material	EVA with 600D polyester backing
Extendable	No
Capacity (ml)	3200
Weight (g)	340
Size (cm)	L31 x W16 x H15

SHE-07

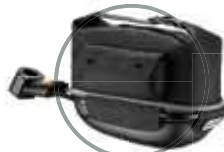
Well padded interior with three inner pockets and zipped mesh compartment in the lid. Three outer mesh pockets are at front and sides with 3M™ reflective material to increase visibility.

Available Attachment	LT-43
Material	900D Polyester + 420D Nylon (Rip-stop)
Extendable	No
Light Clip	Yes
Capacity (ml)	4500
Weight (g)	565
Size (cm)	L29 x W22 x H17.5

SH2-06D

Aero-dynamic design trunk bag which contains side pockets, carry handle, adjustable shoulder strap, adjustable partition, and bungee cord on top for attaching loose items.

Available Attachment	LT-40A + LT-40B / LT-40A + LT-40RB / Velcro Fastening
Material	600D Polyester, PU leather
Extendable	No
Capacity (ml)	7400
Weight (g)	480
Size (cm)	L34 x W17 x H20



Left side of bag



SHE-08

Well padded interior with three inner pockets and zipped mesh compartment in the lid. Three outer mesh pockets are at front and sides with 3M™ reflective material to increase visibility.

Available Attachment	LT-43
Material	900D Polyester + 420D Nylon (Rip-stop)
Extendable	No
Light Clip	Yes
Capacity (ml)	4500
Weight (g)	570
Size (cm)	L27 x W22 x H17

SHE-09

Trunk bag with EVA molded bottom, big capacity for the main bag, and a small zipped side pocket. Alloy frame with quick release fitting attaches to the seat post (LT-43).

Available Attachment	LT-43
Material	600D Polyester + EVA with 600D Polyester backing
Extendable	No
Capacity (ml)	5700
Weight (g)	590
Size (cm)	L30 x W16 x H24

SH2-06E

Aero-dynamic design trunk bag which contains carry handle, adjustable shoulder strap and bungee cord on top for attaching loose items.

Available Attachment	LT-40A + LT-40B / LT-40A + LT-40RB / Velcro Fastening
Material	600D Polyester, PU leather
Extendable	No
Capacity (ml)	6800
Weight (g)	425
Size (cm)	L34 x W17 x H20

New



SH3-806DR

Trunk bag designs with rigid foam-lined walls. It contains an internal pouch, two large zipped side pockets, and extra pocket on top. It also comes with a carry handle and a detachable shoulder strap.

Available Attachment	LT-40 / Velcro Fastening
Material	600D Polyester + PVC leather
Extendable	No
Capacity (ml)	6600
Weight (g)	740
Size (cm)	L32 x W23 x H18



SH-506DR

Trunk bag with rigid foam-lined walls and zipped expandable top section. It comes with an internal pouch, key hook, 2 large zipped side-pockets and a bungee cord on top. Integrated carry handle and detachable shoulder strap included.

Available Attachment	LT-40A + LT-40B / LT-40A + LT-40RB / Velcro Fastening
Material	600D Polyester + 420D Nylon (Rip-stop) / 1000D Cordura®
Extendable	Yes
Light Clip	Yes
Capacity (ml)	6800 / 8700
Weight (g)	730
Size (cm)	L35 x W18 x H22



SH-706PR

Expandable trunk bag with a zipped extendable top section and 2 expanding pannier side pouches. Rigid foam-lined walls with internal pouch and key hook. Bungee cord on top for attaching loose items. Carry handle and detachable shoulder strap.

Available Attachment	LT-40A + LT-40B / LT-40A + LT-40RB / Velcro Fastening
Material	600D Polyester + 420D Nylon (Rip-stop) / 1000D Cordura®
Extendable	Yes
Light Clip	Yes
Capacity (ml)	5200 / 13200
Weight (g)	790
Size (cm)	L35 x W18 x H21.5



CIS-06

Large trunk bag that also can be carried as a shoulder bag. The bottom layer can store dietary clothing or stuff. Comes with a detachable shoulder strap and integrated carry handle.

Available Attachment	Velcro Fastening
Material	Polyester + PU Leather
Extendable	Yes
Light Clip	Yes
Capacity (ml)	12800
Weight (g)	937
Size (cm)	L49 x W17 x H33.5

SH-806R

Aerodynamic trunk bag with rigid foam-lined walls, 2 large zipped side pockets and bottle holder. It comes with internal accessory pouches, an integrated carry handle, and detachable shoulder strap.

Available Attachment	LT-40A + LT-40B / LT-40A + LT-40RB / Velcro Fastening
Material	600D Polyester + 420D Nylon (Rip-stop) / 1000D Cordura®
Extendable	Yes
Light Clip	Yes
Capacity (ml)	7700
Weight (g)	730
Size (cm)	L38.5 x W22 x H22



SH-06EP

Trunk bag with rigid foam-lined walls, internal pouch, key hook, and detachable shoulder strap. A bungee cord on top for attaching loose items.

Available Attachment	LT-40A + LT-40B / LT-40A + LT-40RB / Velcro Fastening
Material	600D Polyester
Extendable	No
Capacity (ml)	4800
Weight (g)	265
Size (cm)	L33 x W16.5 x H17



Quick Release System LT-40A+LT-40B



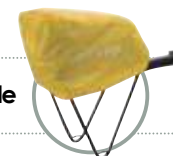
LT-40RB



LT-43



Extendable



Rain Cover
Rain Cover is available as an optional item for all saddle bags.



Big capacity

SH-21

Top tube bag with big capacity. Special Velcro straps allow users to cut the Velcro strap for appropriate length, in order to fit the bicycle frame.

Available Attachment	Velcro Fastening
Material	600D Polyester + Tarpaulin
Capacity (ml)	500
Weight (g)	75
Size (cm)	L16 x W5 x H8.5



Special opening design

SH-22

Top tube bag. A new design for easy access to bag and special Velcro straps allow users to cut the Velcro strap for appropriate length, in order to fit the bicycle frame.

Available Attachment	Velcro Fastening
Material	600D Polyester + Tarpaulin
Capacity (ml)	300
Weight (g)	80
Size (cm)	L16 x W4 x H8



New

SH3-11W

Handy frame pack is designed with horizontal zipped opening. The Ideal is for carrying tools, first aid kit or other essential small items. It can be fastened to the top tube and seat tube with Velcro straps.

Available Attachment	Velcro Fastening
Material	600D Polyester + PVC leather
Capacity (ml)	1100
Weight (g)	72
Size (cm)	L24 x W5 x H11



SH-11W

A top tube bag, which is secured at top tube and seat tube, integrates with a shoulder pad for carrying a bicycle.

Available Attachment	Velcro Fastening
Material	600D Polyester + 420D Nylon (Rip-stop)
Capacity (ml)	500
Weight (g)	130 (Not include tool set)
Size (cm)	L25 x W4 x H25



SH-12

Small pack with an internal pouch ideal for carrying valuables and snacks. Large flap with velcro closure. Velcro strap bindings for fastening to the top tube.

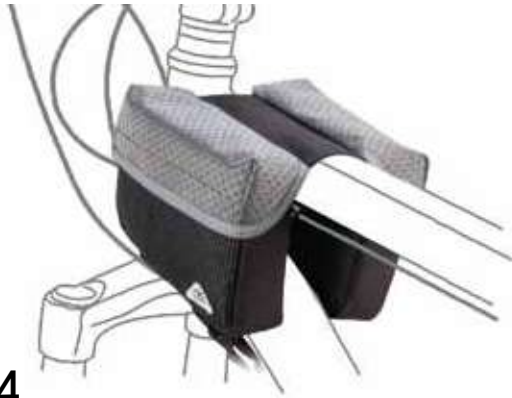
Available Attachment	Velcro Fastening
Material	600D Polyester
Capacity (ml)	400
Weight (g)	60
Size (cm)	L20 x W4.5 x H9



SH-12H

Tall pack for carrying valuables and snacks. Side phone pocket, zipped front pocket and internal key hook. Large flap with velcro closure and clear pouch. Supplied with a shoulder strap. Fastens to the top tube or handlebar.

Available Attachment	Velcro Fastening
Material	600D Polyester + 420D Nylon (Rip-stop) +PVC
Capacity (ml)	1300
Weight (g)	180
Size (cm)	L22 x W8 x H15.5



SH-14

1-piece set featuring 2 top tube pannier bags, each with a top cover and an internal mesh pocket. velcro fastenings. Ideal for keeping a phone, camera, valuables and snacks close to hand while riding

Available Attachment	Velcro Fastening
Material	600D Polyester + 420D Nylon (Rip-stop)
Capacity (ml)	600
Weight (g)	100
Size (cm)	L15 x W12 x H11



SH-15

1-piece set featuring 2 top tube pannier bags with zipped top openings. Each bag has an internal pouch and an external mesh pocket. Velcro fastenings. Ideal for keeping valuables and snacks within reach while riding.

Available Attachment	Velcro Fastening
Material	600D Polyester + 420D Nylon (Rip-stop)
Capacity (ml)	600
Weight (g)	110
Size (cm)	L14 x W12 x H11



SH-16

1-piece set featuring 2 top tube pannier bags with a phone pocket in the middle. Each bag has an elasticized lid with a strap and buckle closure. Velcro fastenings. Perfect for keeping essential items nearby while riding.

Available Attachment	Velcro Fastening
Material	600D Polyester + 420D Nylon (Rip-stop)
Capacity (ml)	800
Weight (g)	180
Size (cm)	L14 x W17 x H16



SH-17

Top tube pannier with a mobile phone at its center. Two side bags contain a mesh layer for miscellaneous objects. Large reflective materials at sides to increase safety at night.

Available Attachment	Velcro Fastening
Material	600D Polyester + 420D Nylon (Rip-stop)
Capacity (ml)	1200
Weight (g)	170
Size (cm)	L17.5 x W12 x H14



SH-18

Top tube bag with big capacity. One mesh pouch at front and a side layer for miscellaneous objects. Large reflective materials at side increase safety at night.

Available Attachment	Velcro Fastening
Material	600D Polyester + 420D Nylon (Rip-stop)
Capacity (ml)	800
Weight (g)	75
Size (cm)	L20 x W6.5 x H13.5



STO-19

Top tube bag with magnetic closure and a small zipped pocket. This bag is perfect size for a cell phone, wallet, and your keys.

Available Attachment	Velcro Fastening
Material	1000D Cordura® + 600D Polyester
Capacity (ml)	800
Weight (g)	115
Size (cm)	L19.5 x W6.5 x H11.5



WP-6103PH-N

MOBILE PHONE BAG

Waterproof smartphone case for iPhone 4/4S. With your 100% Waterproof Smartphone case, you no longer need to worry about keeping your smartphone protected and dry when riding. The patented Quick Release System allows for secure mounting and easy access while on the move. Available in 4 colors.



Attached on handlebar



Available Attachment	Easy Clip 2 / Easy Clip 3
Material	PU leather + Nylon
Weight (g)	50
Size (cm)	L6.4 x W1.2 x H12

WP-20S

TOP TUBE BAG

Seam welded waterproof top tube bag. This bag is big enough to hold your cell phone, wallet, and your keys.



Available Attachment	Velcro Fastening
Material	Nylon with TPU coating
Capacity (ml)	500
Weight (g)	70
Size (cm)	L15 x W4.5 x H8.8

WP-9401R-C

SADDLE BAG

Aero-dynamic wedge shape waterproof saddle bag with sealed zipper access.



Available Attachment	LT-29
Material	Nylon with TPU coating
Capacity (ml)	700
Weight (g)	100
Size (cm)	L17 x W10 x H10



WP-9103R

HANDLEBAR BAG

A zipped front bag and two mesh bags at sides for small objects and bottle. Map case on the top of bag for map or GPS.

Available Attachment	LT-98
Material	Nylon with TPU coating
Capacity (ml)	3700
Weight (g)	450
Size (cm)	L21 x W12 x H21



WP-1906R

TRUNK BAG

Two external pockets with sealed zipper at sides. Carry handle and detachable shoulder strap. Bungee cord on top for attaching loose items.

Available Attachment	LT-40A + LT-40B / LT-40A + LT-40RB / Velcro Fastening
Material	Nylon with TPU coating
Capacity (ml)	6400
Weight (g)	595
Size (cm)	L35.5 x W21 x H20

WP-909SR

PANNIER

Suitable for use on the front or rear rack. Internal zipped pocket. Padded base and sides to protect the contents. Hi-visibility reflective material for improved road safety.



Available Attachment	R
Material	Nylon with TPU coating
Capacity (ml)	27200
Weight (g)	1420
Size (cm)	L25 x W16 x H36

WP-909LR

PANNIER

External side pocket with sealed zipper. Internal zipped pocket. Padded base and sides to protect the contents. Hi-visibility reflective material for improved road safety.



Available Attachment	R
Material	Nylon with TPU coating
Capacity (ml)	36000
Weight (g)	1580
Size (cm)	L34 x W16.5 x H40



Carry handle

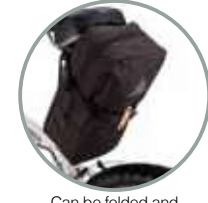


Can be folded and attached on bicycle

SH-5311

Bag for carrying a complete bicycle. Large zipped opening, 2 padded base sections, 3 internal accessories pockets and 2 wheel pockets with protection for the hubs. Includes binding straps and large carry handles. Folds into its own compact carry bag that can be fitted under the saddle.

Material	600D Polyester
Weight (g)	1445
Size (cm)	L115.5 x W26.5 x H84 (Extend) L17 x W15 x H30 (Storage)
Design For	26" bicycle



Can be folded and attached on bicycle

SH-5311S

Bicycle bag for quick transport on the train or bus. Only the front wheel needs to be removed to fit. The entire bag can be packed and carried under your saddle when not in use.

Material	600D Polyester
Weight (g)	1412
Size (cm)	L137 x W21 x H78 (Extend) L17 x W15 x H30 (Storage)
Design For	29" bicycle



Carry handle



Can be folded and attached on bicycle

SH-5311FL

Bag for carrying a 20" folding bicycle. Large zipped opening. Extendable layer is available for oversized folding bicycle. Folds into its own compact carry bag that can be fitted under the saddle.

Material	600D Polyester
Extendable	Yes
Weight (g)	855
Size (cm)	L80 x W25-36 x H68 (Expanded) L23.5 x W15 x H15 (Storage)
Design For	20" Folding bicycle



Carry handle



Design with wheel, easy moving

SH-5312FL

Deluxe bag with wheels and towing handle for transporting a complete folding bicycle. Zipped extendable section accommodates larger bikes. Includes thick padding for superior protection, an internal accessories pocket and detachable shoulder strap.

Material	600D Polyester
Extendable	Yes
Weight (g)	2685
Size (cm)	L80 x W25-36 x H68 (Expanded)
Design For	20" Folding bicycle



Other Bags



CIS-1850

This shoulder bag has enough room for a laptop and your documents. The front pocket can carry your business cards, pens, or other small items

Material	Polyester + PU Leather
Capacity (ml)	9500
Weight (g)	744
Size (cm)	L41 x W12 x H26

SH-04LTR

Messenger bag with an internal padded laptop compartment and a range of stationery storage pockets. Zipped pocket in the flap, and 1 zipped pockets at side. With quick release buckle, it can be installed on the handlebar as a handlebar bag.

Available Attachment	LT-98 / None
Material	600D Polyester / 1000D Cordura®
Capacity (ml)	12000
Weight (g)	1120
Size (cm)	L42 x W12.5 x H30

SH-1850S

A shoulder bag designed to carry an iPad. Main pocket can store cables and earbuds and the outer pocket is an organizer.

Material	Cotton + PU Leather
Capacity (ml)	5600
Weight (g)	406
Size (cm)	L28 x W3 x H34.5

SH-6850 L / M

Messenger bag with an internal padded laptop compartment and a range of stationery storage pockets. Zipped pocket in the flap, document pocket at the back and 2 mesh bottle pockets. Detachable pouch on the shoulder strap for a phone or MP3 player

Material	600D Polyester / 1000D Cordura®
Capacity (ml)	L 23800, M 16400
Weight (g)	L 1040, M 873
Size (cm)	L L54 x W9 x H39 M L45 x W9 x H31

SH3-19BT-2



New

SH3-19BT-1

SH3-19BT

Fashion cycling waist bag. It has a front pocket for small items, a square light attachment for the rear light, and a transparent layer at top for the smart phone.

Available Attachment	Buckle Fastening
Material	Cotton + PVC leather
Capacity (ml)	2400
Weight (g)	260
Size (cm)	L27 x W9 x H15



A layer for smart phone

Waterproof smart phone layer



SH2-6103PH

Smart phone bag, which fits multiple sizes of smart phone, has a 100% waterproof layer, large capacity, key holder and extra inner organized layer. Smart phone works as normal when it is in the waterproof layer. It can be held by provided QR system at handlebar and stem.

Available Attachment	Easy Clip 3
Material	600D Polyester, TPU
Capacity (ml)	400
Weight (g)	90
Size (cm)	L9 x W3.9 x H16

SH-803D Single Wheel Bag



SH-803DD Double Wheel Bag



Single wheel bag / Double wheel bag with an internal accessories pocket and Velcro straps for securing the wheels. Large zipped opening and webbing carry handles. Soft padded lining, padded dividing wall, and additional protection for the wheel hubs are available as optional.

Available Attachment	210D Nylon / 420D Nylon / 600D Polyester
Weight (g)	Single 575, Double 950
Size (cm)	W70 x H70 (SH-803D) W80 x H70 (SH-803DD)
Design for	26" Wheel / 700C Wheel / 29" Wheel



SH2-9107

Backpack with 3D mesh back padding for increased comfort, padded laptop compartment included. Multiple layers design helps used to store stuff well organized. Wide range of accessory pockets, two bottle pockets, and bottom pocket with integrated rain cover.

Material	600D Polyester, Tarpaulin + Nylon
Capacity (ml)	11700
Weight (g)	760
Size (cm)	L27 x W19 x H40



SH2-107

Backpack with 3D mesh back padding for increased comfort, padded laptop compartment included. Multiple layers design helps used to store stuff well organized. Wide range of accessory pockets, two bottle pockets, and bottom pocket with integrated rain cover.

Material	600D Polyester + Nylon
Capacity (ml)	18800
Weight (g)	1050
Size (cm)	L30 x W16.5 x H46



3D Mesh Air Flow Design



Bottle Secure Design



SH-9107

Deluxe backpack with 3D mesh back padding for increased comfort, tough rubber base, padded laptop compartment and bladder compartment. Large padded pouch and a wide range of accessory pockets in the main compartment. Tall zipped front pocket, small external zipped pocket and MP3 player pocket with soft lining. 2 mesh bottle pockets, base pocket with integrated rain cover and detachable phone pouch.

Material	420D Nylon (Rip-stop) / Jacquard Weave
Capacity (ml)	16200
Weight (g)	990
Size (cm)	L36 x W32 x H43

SH-890

Workshop apron with multiple-function pockets. Heavy duty cotton with neck strap and back ties

Material	Cotton
Weight (g)	340
Size (cm)	L59 x H65



BST-03R

Genuine wicker basket with wicker-bound steel handle and quick release handlebar fitting.

Available Attachment	LT-98
Material	Wicker
Capacity (ml)	15600
Weight (g)	635
Size (cm)	L40 x W32 x H26



BST-01GR

Sturdy steel basket with black PE coating. Easy-grip handle and quick release handlebar fitting.

Available Attachment	LT-98
Material	Steel with full PE coating
Capacity (ml)	14400
Weight (g)	845
Size (cm)	L23 x W14 x H22



BST-04R

Tough, UV-resistant PE basket with steel mesh base. Easy-grip handle and quick release handlebar fitting. Special design for the folding bicycle.

Available Attachment	LT-98
Material	PE / Steel
Capacity (ml)	6000
Weight (g)	760



BSTB-01R

Attractive shopping basket made from tough polyester. Alloy frame with quick release handlebar fitting. Nylon closure with drawstring, webbing handles, front pouch, internal zipped pocket, internal phone pouch and detachable zipped pouch.

Available Attachment	LT-98
Material	600D Polyester +70D Nylon
Capacity (ml)	12800
Weight (g)	650
Size (cm)	L36 x W28 x H29





Carrying whole bicycle



Shoulder strap and Velcro strap for front wheel

A-116B

Lightweight bicycle cover, which made by water resistance material, comes with a shoulder strap, wheel strap and storage bag. Users can put bicycle into the cover from top side in order to keep floor clean. Users can also use shoulder strap to carry whole bicycle with the cover.

Material	70D Nylon
Weight (g)	210
Size (cm)	L170 X W70



A-116SI

Lightweight bicycle cover.

Material	70D Nylon
Weight (g)	275
Size (cm)	L177 x W33-58 x H108 (Extend), L19 x W4 x H23 (Storage)



A-116L / A-116LL

PVC waterproof bicycle cover. Protects the bike against sun, rain, dew and dust. *This bicycle cover has another size for 2 bicycles.

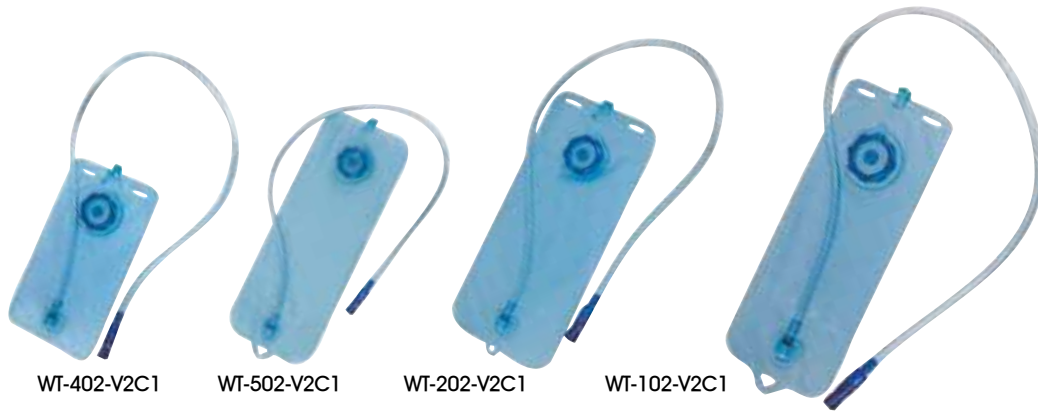
Material	PVC
Weight (g)	A-116L 470, A-116LL 600
Size (cm)	A-116L L195 x H117 A-116LL L101-178 x W76-23 x H114



A-116N

Nylon bicycle dust cover folds away into its own carry case.

Material	70D Nylon
Weight (g)	255
Size (cm)	L176 x H104 (Extend), L19 x W3 x H23 (Storage)



WT-402-V2C1 WT-502-V2C1 WT-202-V2C1 WT-102-V2C1

Water Bladder

Water bladder with tube and bite valve. It also includes loop for hanging to dry and slots for attaching to a hydration pack. The high-neck filling port, tube cover, bladder hangers, bladder cleaning kit are the optional accessories for the water bladder.

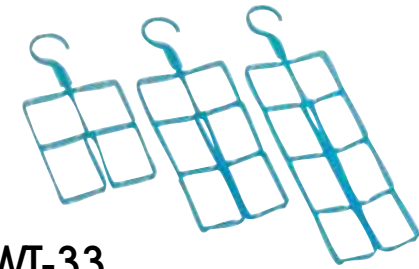
Model No.	WT-402-V2C1	WT-502-V2C1	WT-202-V2C1	WT-102-V2C1
Material	TPU	TPU	TPU	TPU
Size (cm)	W15 x H27	W17 x H36	W17 x H39	W17 x H46
Volume (L)	1.0	1.5	2.0	2.5



WT-34

comprising 2 brushes for cleaning the reservoir, tube and valve.

Material	Stainless steel, Durable nylon bristle
Weight (g)	75
Design For	Water bladder



WT-33

Bladder hangers are available in small, medium and large sizes. Collapsible design for easy insertion through the filling port. Allows the bladder to keep its shape while hanging for fast and effective drying.

Material	PP
Weight (g)	L 52, M 41, S 29
Size (cm)	L W13 x H30.5, M W13 x H23, S W13 x H15
Design For	Water bladder



SH2-108

2-section hydration pack is featuring a bladder layer and two large zipped storage compartments. Accepts water bladders up to 2.0L capacity (Water bladder is not included).

Material	600D Polyester, PU leather
Capacity (ml)	6900
Weight (g)	310
Size (cm)	L34 x W4.5 x H50



NL-106

Easy-fill hydration pack allows water to be added via a filler cap in the pack, without removing the bladder. Accepts high-neck water bladders up to 2.5L capacity (Water bladder is not included).

Material	1000D Cordura®
Weight (g)	345
Size (cm)	L22 x W2 x H47
Design For	2.5L Water Bladder



SH-3106

2-section hydration pack featuring a bladder compartment and large zipped storage compartment. An external mesh pocket allows fast access to loose items. Accepts water bladders up to 2.0L capacity (Water bladder is not included).

Material	600D Polyester + 420D Nylon (Rip-stop) / 1000D Cordura®
Weight (g)	300
Size (cm)	L19 x W3 x H43
Design For	2.0L Water Bladder



SH-6108K2

Hydration pack with 3D mesh back padding. Large storage compartment with an internal pocket and pouch for a 2.0L bladder. Zipped front pocket with an internal mesh pouch and key hook. External mesh pocket and bungee cord for securing a helmet (Water bladder is not included).

Material	600D Polyester + 420D Nylon (Rip-stop)
Capacity (ml)	6200
Weight (g)	360
Size (cm)	L22 x W7 x H43
Design For	2.0L Water bladder

Hidden QR system

Separated Mounting System



SH2-046PETR

A pet pannier, which has large capacity, can be separated from mounting system to a normal hand pet bag. It also has an adjustable strap. The cool bag and warm bag can be placed inside of comfortable pad, which can make pets feeling good. This bag is designed for riding the bicycle with the small animals. The maximum loading capacity of SH2-046PETR is 9kgs.

Available Attachment	R
Material	600D Polyester
Capacity (ml)	13000
Weight (g)	1490
Size (cm)	L40.5 x W23 x H27.5



Hidden QR system

SH2-047PETR

A pet pannier, which can be converted into a backpack, includes large inner compartment and one front pocket. It also comes with an integrated carry handle and hidden mounting system. The cool bag and warm bag can be placed inside of comfortable pad, which can make pets feeling good. This bag is designed for riding the bicycle with the small animals. The maximum loading capacity of SH2-047PETR is 9kgs.



Available Attachment	BR / BCR / R
Material	600D Polyester
Capacity (ml)	22600
Weight (g)	1620
Size (cm)	L32 x W31 x H44



Backpack form



Pannier form

SH-049PETR

This handlebar bag is designed for carrying a small pet. Ventilated side and top panels keep your friend safe and the comfort pad can be heated or cooled to keep them feeling good. The maximum loading capacity is 4kgs.

Available Attachment	LT-98
Material	600D Polyester
Capacity (ml)	17800
Weight (g)	1300
Size (cm)	L27 x W37 x H42



Warm Bag



Cool Bag



Roll up for air convection

SH-06PET

A trunk bag that is designed for your pet. Interior pad keeps your pet comfortable while an integrated leash keeps your pet safe. The maximum loading capacity depends on the rack.

Available Attachment	Velcro Fastening
Material	Jacquard Weave + PU Leather
Capacity (ml)	10600
Weight (g)	925
Size (cm)	L42 x W23 x H25



Pet Bag

Hidden QR system

SH2-031

Handlebar bag, which design for kids, has a big zipped main compartment, adjustable shoulder strap and hidden mounting system. Please note, the recommended age for this bag is 2~7 years, the adjustable shoulder strap and handlebar secure straps must be watched by adult when children use it.

Available Attachment	Velcro Fastening
Material	600D Polyester
Capacity (ml)	2200
Weight (g)	175
Size (cm)	L23 x W7 x H20



Hidden QR system

SH2-032

Handlebar bag, which design for kids, has a big zipped main compartment, adjustable shoulder strap and hidden mounting system. Please note, the recommended age for this bag is 2~7 years, the adjustable shoulder strap and handlebar secure straps must be watched by adult when children use it.

Available Attachment	Velcro Fastening
Material	600D Polyester
Capacity (ml)	2000
Weight (g)	145
Size (cm)	L22.5 x W7 x H19



Hidden QR system

SH2-033

Handlebar bag, which design for kids, has a big zipped main compartment, inner mesh layer, adjustable shoulder strap and hidden mounting system. Please note, the recommended age for this bag is 2~7 years, the adjustable shoulder strap and handlebar secure straps must be watched by adult when children use it.

Available Attachment	Velcro Fastening
Material	600D Polyester
Capacity (ml)	4000
Weight (g)	175
Size (cm)	L25 x W14 x H18



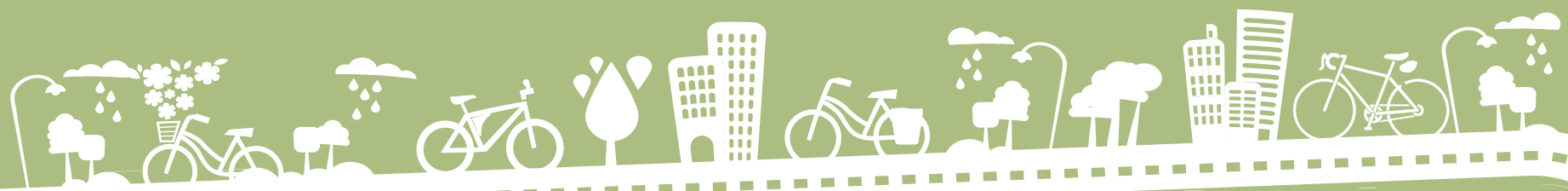
Hidden QR system

SH2-034

Backpack/Handlebar bag, which designs for kids, has a big zipped main compartment, front covered layer, two side bottle pockets and hidden handlebar mounting system. When kids use this bag as a handlebar bag, the shoulder straps can be released and put it into a layer. Please note, the recommended age for this bag is 3~7 years, the handlebar secure straps must be watched by adult when children use it.

Available Attachment	Velcro Fastening
Material	600D Polyester
Capacity (ml)	5300
Weight (g)	260
Size (cm)	L24 x W11 x H29





Quick Release System

LT-98LS
Light Stand (optional item)



LT-27

The features of LT-27 are tool-less, light weight, and easy to use. Users only need to oblique the saddle bag to the bottom-center of saddle and twist it back to the normal position for installation, reverse the steps for the removal.



Material	Nylon
Carrying Capacity (kg)	2
Designed For	Saddle bags



LT-28

The features of LT-28 are tool-less, light weight, and easy to use. LT-28 can be fit in any type of saddle. The guarantee period of rubber parts is 2 years; they can be replaced by hand easily.



Material	Nylon, Rubber
Carrying Capacity (kg)	2
Designed For	Saddle bags



LT-98

It is not only strong and stable but also very easy to use. LT-98 light stand is available as an optional item. Users will have an extra space for the front light and other accessories.

Material	Nylon
Fitting Range	22.2mm ~ 31.8mm
Carrying Capacity (kg)	6
Designed For	Handlebar Bag, Basket



LT-28-OB

LT-28-OB is designed for bags or other accessories to hold on the seat post or the handlebar. It also has the functions of tool-less, light weight, and easy to use. The guarantee period of rubber part is 2 years; it can be replaced by hand easily.

Material	Nylon, Rubber
Carrying Capacity (kg)	1
Designed For	Saddle Bag, Handlebar Bag



LT-01MP

LT-01MP is designed for the cell phone bag. It is not only having a function of changing direction but also can be separated from main buckle to fit on the belt or backpack.



Material	Nylon
Fitting Range	22.2mm ~31.8mm
Carrying Capacity (kg)	1
Designed For	Cell Phone Bag



New

LT-30C

LT-30C is designed for the pannier. The features are easy to click on and removal.

Material	PP
Carrying Capacity (kg)	9



LT-30

LT-30 is designed for the pannier. The features of LT-30 are easy to click on and easy to removal.

Material	Nylon, Steel with PU coating
Carrying Capacity (kg)	9
Designed For	Pannier



PAT.

LT-30B

LT-30B is a fixed component of LOTUS' quick release systems.

Material	Nylon
Carrying Capacity (kg)	3
Designed For	Pannier, Trunk Bag



PAT.

LT-31

LT-31 is designed to fix pannier at the side frame of rack.

Material	Nylon
Designed For	Pannier



PAT.

LT-31DP

LT-31DP is designed to fix pannier at the side frame of rack. It is 4-ways adjustable, thus, users can easy to fit the bag to rack.

Material	Nylon
Designed For	Pannier



PAT.

LT-25

The features of LT-25 are small, light weight, and easy to use.

Material	Nylon
Carrying Capacity (kg)	2
Designed For	Saddle bags



PAT.

LT-29

The features of LT-29 are small, light weight, and easy to use.

Material	Nylon
Carrying Capacity (kg)	2
Designed For	Saddle bags



PAT.

LT-25W

LT-25W is a special designed for the comfort saddle bag.

Material	Nylon
Carrying Capacity (kg)	2
Designed For	Saddle bags

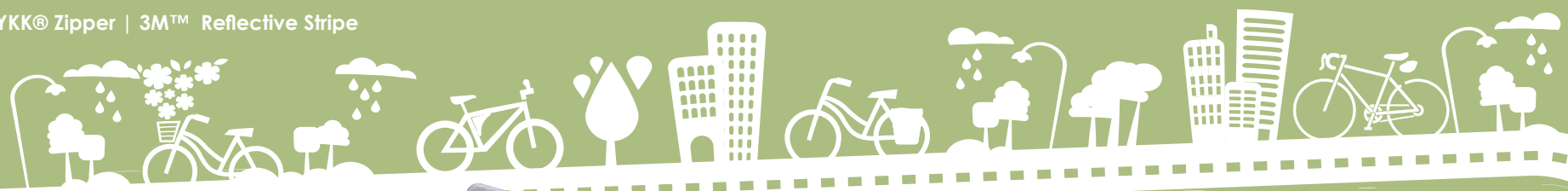


PAT.

LT-25P

LT-25P is designed as an extended part of LT-25. Only use it when the saddle is too big or the bottom side of saddle has too much space.

Material	Nylon
Designed For	Saddle bags



Quick Release System



LT-44

Alloy front carrier. It has alloy tube frame, wire stays and adjustable bracket. It has to be fixed with the V brake pivots.

Material	Alloy
Carrying Capacity (kg)	9
Designed For	Front Rack Bag, Basket

PAT.



LT-40A

LT-40B

LT-40A+LT-40B

LT-40A and LT-40B quick release system are designed as a mounting system for the trunk bags. It is very safe, strong, and easy to use. It only needs one second to install or release. LT-40B is for bicycles which have a rack already; LT-40RB is advised for the bikes which do not have a rack yet.

Material	Nylon
Carrying Capacity (kg)	10
Designed For	Trunk Bag



LT-40RB

A quick release rack, which integrates the function of LT-40B, has the following features, such as strong, light weight and easy to use.

Material	Aluminum
Fitting Range	22.2mm ~ 31.6mm
Carrying Capacity (kg)	5
Designed For	Trunk Bag, Pannier

PAT.



HP-001

HP-001 is designed as a part of QR system for handlebar bag and basket. It must be used with LT-88A1, LT-88A2, or LT-98 QR system. Strong structure, light weight and easy to use are its features.

Material	Aluminum
Designed For	Handlebar Bag, Basket

PAT.



LT-43

LT-43 is designed for the trunk bag. The features are light weight, strong, stable, and easy to use. It can be separated to two parts; therefore, users only need to carry frame part with bag when you leave your bike.

Material	Nylon, Aluminum
Fitting Range	22.2mm ~ 31.6mm
Carrying Capacity (kg)	5
Designed For	Trunk Bag

Color Chart



Gray



Blue



Yellow



Red



Navy Blue



Orange



Orange Red



Green



Dark slate Gray



Lime



Magenta



Beige



Dark Brown



Black



Woodland Camo



Khaki



Digital Woodland Camo



Army Universal Camo



Desert Camo



Digital Desert Camo



Coyote

Material List

MATERIAL	FEATURES
70D Nylon	<ul style="list-style-type: none"> • PU Coating • Water-Resistant
210D Nylon	<ul style="list-style-type: none"> • PU Coating • Water-Resistant
420D Nylon (Rip-Stop)	<ul style="list-style-type: none"> • PU Coating • Water-Resistant
420D Nylon	<ul style="list-style-type: none"> • PU Coating • Water-Resistant
600D Polyester	<ul style="list-style-type: none"> • PU Coating • Water-Resistant
1000D Nylon	<ul style="list-style-type: none"> • PU Coating • Resistant to abrasions, tears, and punctures • Rugged durability and lightweight strength • Cordura label and swing tag are available
1682D Nylon	<ul style="list-style-type: none"> • PVC Coating • Water-Resistant
PVC	<ul style="list-style-type: none"> • Pass EN-71 Test
PVC Leather	<ul style="list-style-type: none"> • Water-Resistant • Waterproof and Abrasions-Resistant
9oz Cotton	<ul style="list-style-type: none"> • No Coating / PU Coating, depends on products
12oz Cotton	<ul style="list-style-type: none"> • No Coating / PU Coating, depends on products
TPU	<ul style="list-style-type: none"> • Environmental-friendly Material
PU	<ul style="list-style-type: none"> • Recyclable Material
Jacquard weave	<ul style="list-style-type: none"> • PU coating / PVC coating, depends on products

SHINE-HO reserved the right to change specifications without notice.
All dimensions are approximate.

D=Denier

Color Chart & Material List



SHINE-HO KNAPSACK & BAG MFG. CO., LTD.

No.10, Anlin Rd., Xitun District,
Taichung City 40762, Taiwan (R.O.C.)
TEL: +886-4-2461-2299 FAX: +886-4-2465-3366
Email: sales@lotus-bag.com.tw

www.lotus-bag.com.tw

